



West Virginia DEPARTMENT OF AGRICULTURE
COMMISSIONER, KENT A. LEONHARDT

THE

MARKET

VOLUME NO. 110 | ISSUE NO. 05

Bulletin



MAY 2026

Telling the story of
West Virginia Agriculture

▶ Quality beef starts at Just Our Luck Farm with healthy cattle, green pastures, and care in every season.

COMMISSIONER KENT A. LEONHARDT • DEPUTY COMMISSIONER AMIE MINOR-RICHARD



WVDA NEWS

GROW YOUR CAREER WITH AGRICULTURE!

From the Commissioner

As the 2026 Legislative Session ends, its impact will be felt far beyond the Capitol—reaching farmers, producers, and agribusinesses across West Virginia.

This year’s session reflected a familiar balance: progress in some areas, paired with ongoing challenges in others. We saw efforts to support growth, reduce barriers, and create new opportunities for producers. At the same time, we were reminded that not every priority makes it across the finish line. One of those priorities was dedicated funding for the WV Grown program. While that investment was not included in this year’s budget, its importance has not changed. WV Grown remains one of our strongest tools for connecting consumers to West Virginia products and supporting the farmers and businesses behind them, and we will continue to make that case moving forward.

The FY27 Budget Bill (SB250), signed by the Governor on March 12, reflects both investment and constraint. Agencies were initially asked to plan for a two percent reduction in General Revenue, but partial restoration allowed for across-the-board pay increases. For the WVDA, the final budget includes funding for an additional Apiary Program position—an important step in strengthening support for our beekeepers statewide. It also includes \$250,000 in ongoing support for the Capitol Kitchen project in Kanawha County and \$100,000 in one-time funding for the Willow Bend Demonstration Farm in Monroe County.

Beyond the budget, lawmakers advanced policies that will help shape the future of agriculture. Senate Bill 44 expands West Virginia’s cottage food framework, allowing more homemade products to be produced and sold from residential kitchens. It also creates a pathway for vendors producing temperature-controlled foods, opening new opportunities for small-scale and value-added producers.

The Legislature also addressed kratom through Senate Bill 985. Kratom is a plant-derived substance often marketed for stimulant or pain-relief effects. This legislation strengthens consumer protections by establishing a minimum purchase age of 21, along with clearer standards for retail sale, registration, and enforcement.

Like many agencies, we continue to operate in an environment of rising costs and limited resources. Our General Revenue funding remains below 2008 levels, requiring us to be strategic in how we serve the industry.

Even with those challenges, our focus remains the same: supporting our farmers, strengthening our food systems, and creating opportunities for agriculture to grow.

**Commissioner of Agriculture
Kent A. Leonhardt**



Looking for a career in agriculture? The WVDA is hiring! Whether your background is in accounting or biology, animal health or marketing, check out our employment opportunities at <https://wvda.applicantstack.com/x/openings>.



WV POULTRY ASSOCIATION SCHOLARSHIP

The West Virginia Poultry Association (WVPA) is once again offering educational scholarships to students entering or continuing studies at a technical, two-year, or four-year institute. The WVPA Scholarship Program was established in 2019 to prepare a new generation of leaders and encourage them to pursue their interests in agriculture and agriculture-related fields. The WVPA Board of Directors has set aside \$3,000 for this funding cycle.

To be eligible for a scholarship, you must be a member of the WVPA or the child/grandchild of a WVPA member, have a current GPA of 2.75 or above, include three references and two letters of recommendation, provide a current transcript or GED certificate, and write an essay.

Applications, requirements, and instructions can be found at <https://www.westvirginiapoultryassociation.com/scholarshipprogram/>. The application packet must be completed and postmarked by June 1 for consideration. The successful applicants must be available to attend the President’s Dinner Friday evening, July 17th, 2026, during the WV Poultry Convention and Festival.

Growing a Better Tomorrow



SENIOR FARMERS MARKET NUTRITION PROGRAM

Fresh, local produce is within reach this summer through the Senior Farmers Market Nutrition Program. The program runs June 1 through October 31, 2026, and eligible seniors will receive a \$30 coupon booklet. To receive vouchers, contact your local senior center. Seniors must receive vouchers in the county where they reside, but vouchers can be used at any participating location in West Virginia.



ENVIROTHON

Twenty-one teams from 14 West Virginia counties recently competed in the West Virginia Envirothon, which returned to Camp Caesar (Webster County) for the first time in a decade. A team from Morgantown High School earned first place and will represent West Virginia at the NCF Envirothon at Mississippi State University this July.

The Envirothon focuses on five subject areas: aquatics, forestry, soils, wildlife, and a current environmental topic.

Participants learn about West Virginia's diverse ecosystem and how they can help conserve and protect it for future generations.



DAIRY NIGHT AT THE BALLPARK

Mark your calendars! Join the WVDA for Dairy Night at the Charleston GoMart Ballpark on Friday, June 12 at 6:35 P.M. There will be dairy games, give-a-ways, and folks can get up close with a calf. Come early to enjoy all the fun while supporting your local dairy farms!



AG & FORESTRY HALL OF FAME BANQUET

The West Virginia Agriculture and Forestry Hall of Fame (AFHOF) will add nine members to its rolls Saturday, July 11, at the 2026 banquet. As in past years, the banquet will be held at Jackson's Mill, home of the WV AFHOF. The reception will begin at 4:00 p.m. and dinner at 5:00 p.m. The cost is \$40 per person. Inductees receive two free tickets. We encourage all those attending to RSVP no later than July 1 to wvuxextension_anr@mail.wvu.edu to ensure all family and friends are accommodated. Money for the tickets will be collected at the door the evening of the banquet. If you have questions, please contact Kim Suder at 304-293-8613.

WEST VIRGINIA GROWN

North Central



► Join the WV Grown Movement!

Since 1986, WV Grown has been the proud heartbeat of West Virginia agriculture, helping thousands of farmers, growers, and food producers share their products not only across our state, but nationwide. Nearly four decades later, our mission is stronger than ever: to showcase the incredible pride and quality that is Rooted in the Mountain State. Whether you're raising cattle, growing cucumbers, or producing specialty goods, the WV Grown logo tells buyers one thing loud and clear: that this product was made with care, right here at home. Every purchase strengthens our local economy and keeps West Virginia thriving. Buying WV Grown makes each of our local producers stronger. With more than 600 members, retail partners, and supporting businesses already on board, now is the perfect time to add your name to the WV Grown family. Ready to grow with us? Contact our Business Development Division at 304-558-2210 or email wvgrown@wvda.us.

PLANNING COORDINATOR



Sherry Mitchell

**North Central
Planning Coordinator**

**(office) 304-558-2210
(cell) 304-941-9167
smitchell@wvda.us**



“

Learn as much as you can from as many sources as you can find. Join social media groups, read books, find a mentor or a coach, get to know your Planning Coordinator and Conservation District specialists. Always be open to new ideas. And have fun!”



BELINGTON BAKERY - MEMBER OF THE

Month



Who: Belington Bakery

Location: Belington (Barbour Co.)

Products: Bagels, pastries, cookies, soups, salads, sandwiches, and coffee & tea.

Where to Buy: The bakery is open Friday, Saturday, Sunday, and Monday. Products can also be found at TipTop Coffee, in Elkins, Blackwater Galley, in Thomas; and the Davis Memorial Marketplace, in Elkins.

▶ **How they got started:**

A little seed of an idea took root and grew quickly in our small town. We brought skills and a passion to focus on high-quality, seasonally appropriate, “nice but not fancy” products, based on real food ingredients, purchased and foraged nearby, processed and packaged in-house. We believe that small towns deserve nice things and we draw on rural make-it-yourself or do without traditions that resonate with our community and customers.

▶ **Future plans:**

We are working towards a sustainable model for a small-town small business that builds community and contributes to sustainable economic development in our region.

▶ **Why join West Virginia Grown?**

We think that using whole, locally produced products just makes sense and are proud to highlight the wild variety and flavors and items that can be produced from West Virginia.

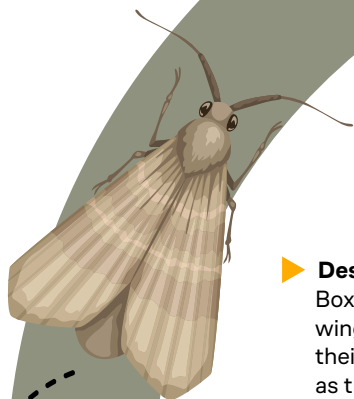
IN THE NEWS

- **Triple E Farms** is serving up inspiration for Beef Month with a delicious mini beef puff pastry recipe featured on their blog. Visit their website to explore the recipe and shop their pasture-raised pork, chicken, and beef offerings at <https://tripleefarming.com>.
- **Teet's Cattle Company** has new products available just in time for Beef Month, including flavorful seasonings perfect for steak, burgers, and more. Check out their latest offerings and elevate your next cookout at <https://teetscattlecompany.com/>.
- **Appalachian Huntsmen** has introduced a new product lineup that pairs perfectly with steak, burgers, and other beef favorites—ideal for adding bold flavor during Beef Month celebrations. Visit <https://www.facebook.com/appalachianhunterman> for more information.
- **Graystone Acres** offers a recipe-filled blog packed with delicious meal ideas to help you make the most of Beef Month. Browse their collection for fresh inspiration in the kitchen at <https://www.graystoneacres.com/recipes>.



BOX TREE MOTH *In WV*

▶ *Box Tree Moth (BTM) is an invasive insect pest that feeds on species of Boxwood (Buxus spp.), an ornamental shrub used in landscaping across the state.*



▶ **Origin and Movement Timeline**

Box Tree Moth is native to East Asia. After being introduced to and moving through Europe and Canada, it was found in New York in 2021 where it continued making its way across the U.S. The first reported sighting in WV occurred in May 2025 and has since spread to two other surrounding counties.

▶ **Description and Lifecycle**

Box Tree Moths generally have a brown head and white wings, with a thick brown border along the outside edge of their wings. Other variations occur but are not as common as the one described.

Box Tree Moths overwinter as caterpillars in Boxwood leaves. Once temperatures rise, caterpillars emerge and begin feeding. Pupation (the intermediate phase where the caterpillar is transforming into the moth) occurs in late April/early May in silk cocoons on the Boxwood leaves, followed by adult emergence. Female Box Tree Moths then lay eggs on the underside of Boxwood leaves during their approximate 2-week lifespan. Subsequent generations are likely to follow this first generation.

▶ **Control Options**

Control options for BTM include removing infested boxwoods and/or treating Boxwoods with insecticides labeled for Box Tree Moth control (or caterpillar control). Information on infested Boxwood removal protocols and a list of Boxwood shrubbery alternatives can be found on the WVDA website. For more information on control options, please contact the West Virginia Department of Agriculture.

▶ **Damage and Signs and Symptoms of Infestation**

Signs of BTM infestation include skeletonization of leaves, presence of dark green frass (caterpillar excrement), webbing (similar to that of spider silk), Boxwood branch dieback, and/or Boxwood plant decline/death in higher infestation areas. BTM populations are difficult to detect in the early stages, as it can take some time before signs and symptoms are noticeable, even with thorough and regular inspections of Boxwood plants.

▶ **Report Findings**

Finding and tracking infestations of this pest is especially vital to the state of West Virginia to prevent economic losses and spread of this pest to uninfested areas.

Please report any new infestations of Box Tree Moth in West Virginia to bugbusters@wvda.us. If possible, include a good quality photo of the specimen in the email report. A map of current infested counties and further Box Tree Moth information can be found on the WVDA website at the following link: <https://agriculture.wv.gov/divisions/plant-industries/box-tree-moth-page/>



References
USDA APHIS Pest Alert
WVDA Box Tree Moth Fact Sheet

NATIONAL BEEF




Month

▶ *National Beef Month is celebrated every May to honor the beef industry, its producers, and the cultural and nutritional role of beef.*

While there is no single, officially documented start date of when National Beef Month began, it has been celebrated for many years to highlight the beef industry's economic impact and nutritional benefits. Here are some interesting facts:

- As of January 1, 2025, West Virginia had approximately 365,000 total head of cattle and calves, and in 2023, cattle and calf production contributed \$157 million to the state's agricultural sector, second only to the poultry industry.
- West Virginia is well suited for grazing cattle, and the top producers of beef cattle are Greenbrier, Pendleton, Monroe, and Hardy Counties.
- The WVDA's WV Grown program, which has 29 beef producers enrolled, it's the WVDA's official branding initiative to identify and promote products grown, raised, or made within the state. West Virginia has 24 licensed commercial establishments that process beef, as well as other proteins, under state inspection provided by the WVDA's Meat and Poultry Inspection Division.
- As you can see, the beef industry is alive and well in West Virginia and is a significant contributor to our state's economy. The best part about May being National Beef Month...it's also the official start to grilling season! Get out and enjoy grilling your favorite WV Grown steak and burgers with family and friends, and remember the hard-working cattleman and women that helped produce it. Enjoy!

UNDERSTANDING BEEF QUALITY GRADES

| | | |
|---|---|--|
| <p>▶  </p> | <p>▶  </p> | <p>▶  </p> |
| <p>PRIME</p> <p>Prime beef is produced from young, well-fed cattle. It has the most marbling, is produced in smaller quantities than other grades, and is often sold in hotels and restaurants. Prime roasts and steaks are excellent for roasting, grilling, or broiling.</p> | <p>CHOICE</p> <p>Choice beef is high quality and produced in highest quantity, but has less marbling than Prime. Choice roasts and steaks, especially from the rib and loin, will be very tender, juicy, and flavorful. They are suited for roasting, grilling or broiling. Less tender cuts are perfect for slow-cooking.</p> | <p>SELECT</p> <p>Select beef is slightly leaner than Prime and Choice because it has less marbling. It can lack some tenderness, flavor, and juiciness compared to the higher grades. Select grade beef often benefits from slow-cooking or marination prior to grilling.</p> |

▶ NO ROLL

Standard and Commercial grades of beef are frequently sold as ungraded "No Roll" beef. Because No Roll does not carry a grade designation, there is a risk it will not be as tender, flavorful, and juicy as products graded Prime, Choice, or Select.



Funded by Beef Farmers and Ranchers



CARRYING *it* FORWARD

Lacen Forbes Builds on a Family Farm Legacy

Lacen Forbes never really imagined a life away from the family farm she grew up on.

Once her pap's farm, she spent her childhood tagging along at every opportunity—often the only sibling drawn to farm life. After losing her grandmother when she was just one year old, Forbes became her pap's constant companion. Whether helping with daily chores or simply being by his side, that connection to the land took hold early. By the age of 15, she was already working on the farm and continuing the legacy he began.

Not every task was enjoyable. She laughs, remembering jumping off the school bus at the farm to fresh sweet tea and homemade bread—but also long days picking bugs off plants and dropping them into her pap's red Solo cups. Even then, her love for the farm only grew stronger.



Year of the
Woman
Farmer

Today, Forbes is the proud owner and operator of the same 175-acre property in Fairview, West Virginia, now known as The Eddy Farm. The name honors her pap, Harry Eddy, who purchased the farm in 1969. It remained unnamed during his time, but when it passed to Forbes, she chose to give it a name that reflects his legacy.

Forbes inherited the farm as a sophomore in high school in 2012. At the time, the operation consisted of cattle and a garden. Since then, she has steadily expanded it—adding laying hens, meat chickens, pigs, goats, bees, and high tunnel production.

Alongside her husband, Kris, and their son, Knox, Forbes is part of the next generation committed to ensuring the farm continues to thrive.

for him to have produce we raise right out of the high tunnel. I don't think I could go back to buying things from the grocery store. I've been spoiled with this lifestyle, and it really does make a difference."

Forbes once thought her future was in veterinary medicine, but the pull of the farm proved stronger.

"I couldn't leave it—I didn't want to not take care of it," she said. "I felt like it should be me."

As a young woman farm operator, Forbes has leaned on the knowledge and experience of older farmers in her community—those who have seen and worked through just about everything. At the same time, she's mindful of the example she's setting for the next generation.

"If they see me do it, they know they can too," she said. "I've always tried to advocate for farmers. My pap lit the match, and it's been a passion ever since. A farmer is a farmer—whether you're a man or a woman."

“I really do enjoy having fresh food—and my family having it.”

Lacen Forbes | The Eddy Farm

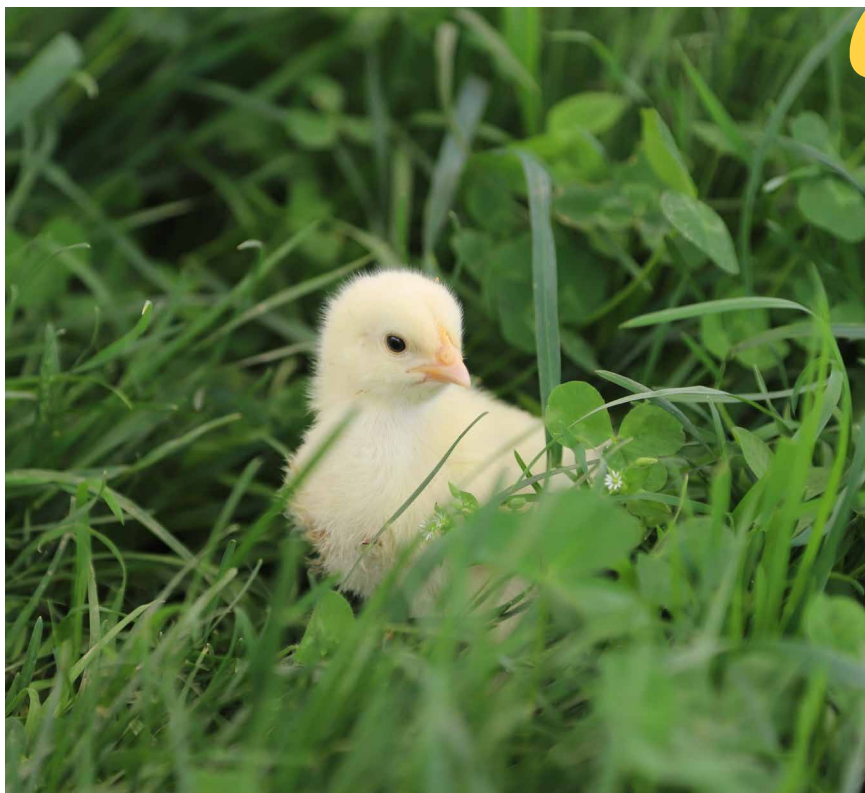
Her story reflects a broader trend across the state. Today, women make up roughly one-third of all farm operators in West Virginia, with nearly 14,000 women working as producers.

Forbes has big plans for The Eddy Farm. Building on what she inherited, her focus is on steady improvement—both in the land and the operation. In the short term, that includes refining a rotational grazing system, improving fencing, and strengthening pasture quality. Looking ahead, she's considering transitioning to organic production and potentially opening a farm store to further connect with her community.

The love of the land that took root in Forbes as a young girl has grown into a deep appreciation for the life she now leads.

"This life I'm living is incredible—most people don't have the opportunities I have," she said. "I wouldn't have what I have without my pap. I try to think about his personality—he never let things get to him. He was positive and happy. I try to be the same way, even through the hard times. When I look around, I think—look at this life I have."

For more information on The Eddy Farm, follow them on Facebook at <https://www.facebook.com/eddyfarmgirl14>.



Lacen Forbes owns and operates The Eddy Farm in Fairview, WV. Forbes is continuing the legacy of her grandfather, Harry Eddy, while also building a diversified operation for her own family.

The farm remains primarily a cattle operation, raising Angus-cross cattle that trace back to her pap's original herd. It's still her favorite part of the operation because of that deep personal connection. Today, the Forbes family runs a cow-calf operation of about 30 to 40 head, primarily grass-fed. They sell beef by the whole and half, as well as through retail, while continuing to diversify the operation. The high tunnel, added in 2023, focuses on warm-season crops like tomatoes, cucumbers, and peppers.

Forbes doesn't take the value of local food for granted.

"I really do enjoy having fresh food—and my family having it," she said. "I share with my aunts and uncles. We are raising a little boy now, and it's very special



SUSTA SUCCESS

▶ *WVDA Hosts Successful SUSTA Inbound Trade Mission Focused on Forest Products*

The West Virginia Department of Agriculture (WVDA) recently hosted a highly successful inbound trade mission, March 26-28, in partnership with the Southern United States Trade Association (SUSTA), connecting international buyers from India and Vietnam with West Virginia's log and lumber industry.

The mission focused exclusively on forest products, with visiting buyers touring log yards and sawmill facilities across the state. These site visits provided a firsthand look at West Virginia's high-quality hardwood resources, sustainable forestry practices, and production capabilities. Stops included Cherry River Lumber (Richwood), Meadow River Hardwood Lumber (Rainelle), and Laurel Creek Hardwoods (Richwood). In addition, buyers met with additional companies in one-on-one meetings before the site visits.

Throughout the mission, participating companies had the opportunity to build relationships, discuss specifications, and explore export opportunities with vetted international buyers. The effort resulted in multiple contract awards, underscoring strong global demand for West Virginia hardwoods and wood products.

"SUSTA inbound missions like this create meaningful opportunities for our natural resource industries," said Commissioner of Agriculture Kent Leonhardt, current president of SUSTA. "By bringing international buyers directly to our operations, we are helping West Virginia businesses expand their reach and compete in global markets."

"This mission gave our companies the chance to build strong, direct relationships with international buyers and showcase the

quality of West Virginia hardwoods firsthand," said Ashley Amos, WVDA Business Development Planning Coordinator and SUSTA liaison, who led the planning and coordination for the visit and regularly participates in SUSTA trainings and programming. "The connections made during these visits will continue to create opportunities for our producers well into the future."

The Southern United States Trade Association is a non-profit organization that works to promote exports of food and agricultural products from the southern United States, including value-added and natural resource-based products. Through programs such as inbound trade missions, market development support, and export assistance, SUSTA helps small and medium-sized businesses grow internationally.

WVDA partners with SUSTA to support West Virginia producers and businesses interested in exporting, providing access to valuable resources and global connections.

Companies interested in learning more about export opportunities or participating in future trade missions are encouraged to contact the WVDA Business Development Division at 304-558-2210.

For more information about WVDA programs and services, visit agriculture.wv.gov.

CROCKPOT COWBOY CASSEROLE

▶ KITCHEN'S ORCHARD AND FARM MARKET

FALLING WATERS

[HTTPS://WWW.KITCHENSFARMMARKET.COM/](https://www.kitchensfarmmarket.com/)



Loaded with savory ground beef, tender sliced potatoes, hearty beans, and melted cheddar cheese, this Crockpot Cowboy Casserole is a rich and comforting meal perfect for busy

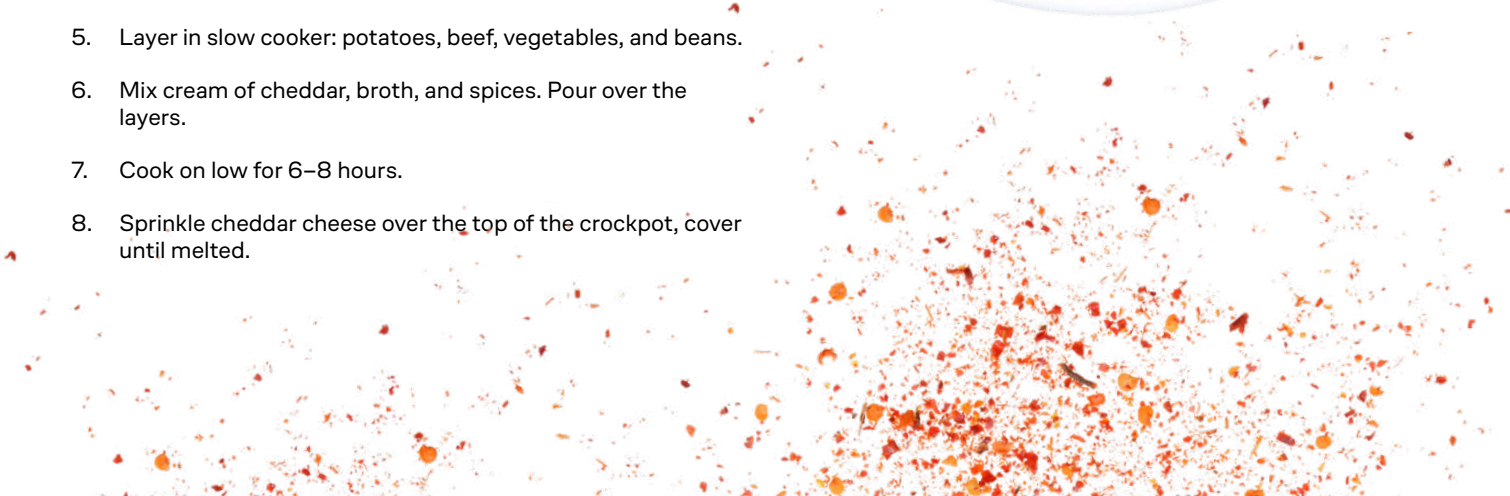
weeknights. Simply layer everything in the slow cooker and let it do the work for a warm, filling dinner everyone will enjoy.

INGREDIENTS

- 1 pound ground beef
- 1 medium onion, chopped
- 3 cloves garlic, minced
- 1 can cream of cheddar soup
- ½ cup beef broth
- 1 can kidney beans, drained and rinsed
- 1 can diced tomatoes with green chiles
- 1 cup of corn
- 1 tsp. chili powder
- ½ tsp. salt
- ¼ tsp. black pepper
- 4 cups sliced potatoes
- 1 cup shredded cheddar cheese
- Cilantro for garnish (*optional*)
- Chopped jalapeño peppers for garnish (*optional*)

DIRECTIONS

1. Gather all ingredients.
2. Chop vegetables uniformly for even cooking.
3. Rinse and drain canned beans to reduce salt.
4. Brown ground beef in a skillet, drain excess fat.
5. Layer in slow cooker: potatoes, beef, vegetables, and beans.
6. Mix cream of cheddar, broth, and spices. Pour over the layers.
7. Cook on low for 6–8 hours.
8. Sprinkle cheddar cheese over the top of the crockpot, cover until melted.



SLOW THE SPREAD

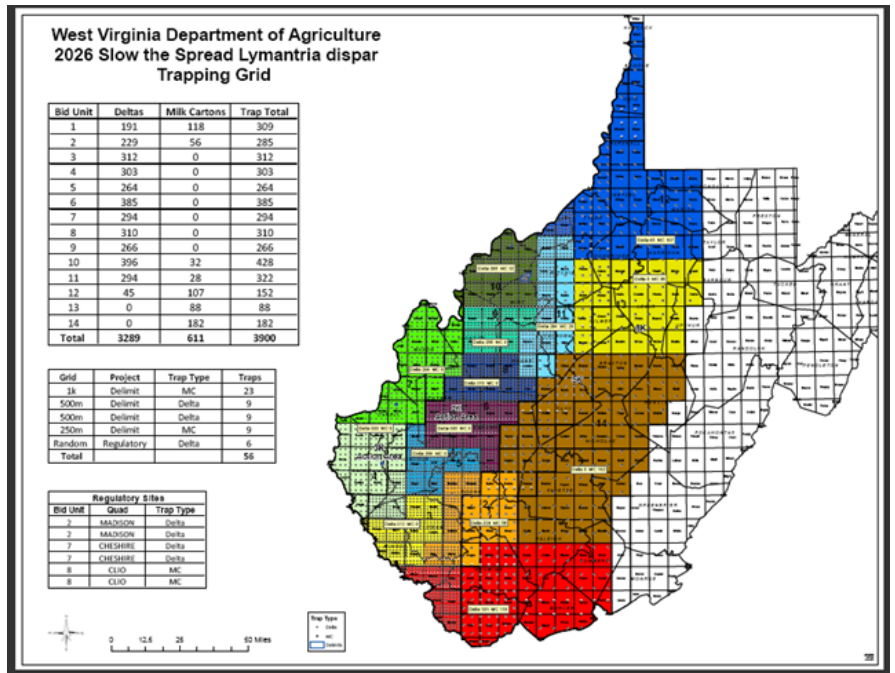
▶ SPONGY MOTH TRAPPING SEASON

The first of April marks the beginning of the 2026 Slow the Spread spongy moth trapping season. This year, the Plant Industries Division of the West Virginia Department of Agriculture, in cooperation with the US Forest Service Slow the Spread Program, will be setting 3,900 pheromone traps across the mountain state for the purpose of monitoring and controlling the highly invasive spongy moth (*Lymantria dispar*). This pest is recognized as a generalized defoliator, feeding on over 300 trees and shrubs with a particular affinity for oaks. One egg mass contains over a thousand viable eggs. One larvae being able to destroy eleven square feet of foliage. These invaders can cause great ecological damage within one growing season, leaving trees entirely bare.

In collaboration with eleven other states spanning from the coast of North Carolina to the North Shore of Minnesota, West Virginia is helping to slow the westward advancement of the spongy moth. Full-time and seasonal employees will be working to make sure all 3,900 traps are placed before the first moth

takes flight in mid-June. WVDA will be placing around 3,300 triangle shaped Delta traps. These traps are primarily placed in a 60-mile action zone that spans the entire state. On the eastern side of this zone over 600 milk carton traps are being placed. Named after their appearance to a cardboard carton of milk, these milk carton traps are placed in areas expecting higher catches of moths.

Traps will remain up until late summer. If you have any questions, please contact: Andy Stotts WVDA Plant Industries Division assistant director at 304-558-2212.



GUYAN CONSERVATION DISTRICT

UPCOMING Events

Don't miss the awesome events happening within Guyan Conservation District this year!

| | | |
|--|----------------|--|
| | MAY 15 | 4:00 PM OPEN HOUSE Guyan Conservation District Office |
| | JUNE 06 | 10:00 AM HIGH TUNNEL FIELD DAY Boone County |
| | SEPT 24 | 5:30 PM GRASSLANDS FIELD DAY Cabell County |

FOLLOW US ON FACEBOOK FOR MORE INFORMATION AT GUYAN CONSERVATION DISTRICT

Contact Us:
Address: 2631 5th Street Road, Huntington, WV 25701 | Phone: (304) 528-5718 | Email: GCD@wvca.us



MAY WVU GARDEN CALENDAR



| Sunday | Monday | Tuesday | Wednesday | Thursday | Friday | Saturday |
|-------------------|--|--|--|--|---|--|
| | | | | | 1 | 2 |
| | | | | | Plant figs Seed or transplant parsley ○ Full Moon | Transplant onions Seed fennel Plant fingerling potatoes |
| 3 | 4 | 5 | 6 | 7 | 8 | 9 |
| | Plant potatoes Transplant or seed Chinese cabbage | Seed broccoli raab Seed snap beans Seed head lettuce | Seed leaf lettuce and winter squash Control broadleaf weeds in lawn | Seed summer squash and cucumber Seed or transplant broccoli | Happy Birthday Cooperative Extension! Seed late celery | Seed sweet corn Seed cilantro Plant bok choy Seed thyme ☾ Last Quarter |
| 10 | 11 | 12 | 13 | 14 | 15 | 16 |
| Mother's Day | Plant early celery and tomatoes Grow mint in containers | Seed or transplant zinnias, marigolds, cosmos and sunflowers | Plant sweet potatoes Harvest scapes from hardneck garlic | Plant peppers, okra and cabbage Harvest established asparagus | Seed borage Seed lima beans Plant dahlia tubers | Seed sweet corn Remove strawberry blossoms on newly transplanted plants ● New Moon |
| 17 | 18 | 19 | 20 | 21 | 22 | 23 |
| | Seed leeks as transplants for planting in early August | Seed or transplant basil Seed lemon cucumbers | Seed or transplant Mexican sunflowers, echinacea and rudbeckia | Prune azaleas, viburnum, lilac and forsythia after blooming | Tip primocane blackberry canes at 36-inch height | Do not over fertilize flowers ☽ First Quarter |
| 24 | 25 | 26 | 27 | 28 | 29 | 30 |
| | Plant eggplant Turn compost Memorial Day | Plant jack-o'-lantern pumpkins | Prune tomatoes at first flowering Plant an herb garden | Stake and mulch tomatoes Trellis cucumbers | Plant asparagus beans Transplant fennel | Seed leaf lettuce as a companion plant with trellised cucumbers |
| ○ Full Moon 31 | | | | | | |

West Virginia University Extension creates and distributes free garden calendars each year. Stop by your local WVU Extension office to get a copy (while supplies last).

MAY 2026

CLASSIFIED ANNOUNCEMENTS

- ▶ **To submit an ad:**
Phone: 304-558-2225
Fax: 304-558-2270
Email: marketbulletin@wvda.us
Mail: 1900 Kanawha Boulevard, E.
 Charleston, WV 25305

June 2026. . .

Phone-In ads for the **June** issue must be received by **12 noon** on **Monday, May 11.**

Written ads for the **June** issue must be received by **1 p.m. on, Tuesday, May 12.**

July 2026. . .

Phone-In ads for the **July** issue must be received by **12 noon** on **Monday, June 9.**

Written ads for the **July** issue must be received by **1 p.m. on, Tuesday, June 10.**

To subscribe to *The Market Bulletin*, email marketbulletin@wvda.us or phone 304-558-3708.

Apiary Events

Barbour Co. Beekeepers Assoc., Monthly Meeting, 4th Thursday, 7:00 p.m., Barbour Co. Fairgrounds in metal quonset hut, Contact Dave Hunt, 304-844-0702.
Cabell/Wayne Co. Beekeepers Assoc., Bi-Monthly Meetings, 2nd Monday, 6:30 p.m., Jan/March/May/July/Sept./Nov., Contact John Marra, 304-617-6981.
Clay Co. Beekeepers Assoc., Contact Mark Davis, 304-651-3002; claycobeekeepers@gmail.com.
Fayette Co. Beekeepers Assoc., Monthly Meeting, last Monday, 6:00 p.m., 401 W. Maple Ave., Contact Rick Forren, 304-539-1303.
Harrison Co. Beekeepers, Discussion Group, Contact Larry Forinash 304-669-5410; lforinash1@gmail.com
Kanawha Valley Beekeepers Assoc., Bi-Monthly Meeting, Contact Rick Armstrong, 304-553-1923.
Marion Co. Beekeepers Assoc., Meeting, 4th Thursday, 7 p.m., Eldora United Methodist Church, Contact Contact Deb Hockenberry, 304-612-4327.
Monongalia Co. Beekeepers Assoc., Monthly Meeting, 1st Tuesday, 6:00 p.m., WVU Ext. Office, 270 Mylan Park Lane, Morgantown, Contact Kevin Hart, kevin.hart@moncountybeekeepers.org.
Mountaineer Beekeepers Assoc., Bi-Monthly Meeting,

2nd Monday, 6:30 p.m., City Bldg. on School Rd, Contact Patrick O'Connell, oconnellpatrick0370@gmail.com.

Mountaineer Beekeepers Assoc., Discussion Meeting, 4th Thursday, 6:30 p.m., Doddridge Co. Library, downstairs meeting room, Union, Contact Patrick O'Connell, oconnellpatrick0370@gmail.com.

Potomac Highlands Beekeepers Assoc., Monthly Meeting, 2nd Thursday, 7 p.m., Romney Firehouse Center, High St., Downtown Romney, Contact Kirby Vining, 202-213-2690; secretary.phba@gmail.com.

Preston Co. Beekeepers Assoc., Monthly Meeting, 3rd Thursday, WVU Ext. Office, Kingwood, Contact Scott Lewis, 304-376-0453.

Southeastern Beekeepers Assoc., Monthly Meeting, 1st Monday, 6:00 p.m., Ronald P. Sharp Alumni Conference Center, WV Osteopathic School, Lewisburg, Contact Rick Forren, 304-539-1303.

Upshur Co. Beekeepers Assoc., Monthly Meeting, 3rd Tuesday, 6:30 p.m., Upshur Co. Farm Bureau Bldg. on Rt. 33 between Buckhannon & Weston, terriobennett@gmail.com.

West Central Beekeepers Assoc., Monthly Meeting, 4th Saturday, 1 p.m., Two Runs Community Bldg., Two Runs.

All bee colonies must be registered with the West Virginia Department of Agriculture. Please contact the Animal Health Division at 304-558-2214.

Apiary Sales

Honeybee equip., honey spinner 4-frames, 5-gal. bucket w/spout to drain, metal stand that hooks on the bucket, homemade stand, \$250/obo. Vicky Blake, 763 Linger Run Rd., Horner, 26372; 304-452-8126

Cattle Sales

Reg. Polled Hereford 15-mo. bull, Hometown blood, \$2,500. Richard Dunn, 68 Tyrone Avery Rd., Morgantown, 26508; 304-594-2603.

Reg. Black Angus bulls, \$3,000. Joanne Edgell, 1471 Bingamon Rd., Worthington, 26591; 304-592-2717.

Reg. Limousin, Lim-Flex & Angus breeding age bulls, passed BSE, vacc., GE EPD's, pref. info avail., good disp., \$5,000. Kim Getz, 122 Dolly Hill Rd., Scherr, 26726; 304-749-8043.

Miniature Zebu: young bulls, 2; bred cow, \$1,000/up. Roy Gibson, 1881 Dog Fork Rd., Kenna, 25248; 304-988-1532.

Polled Hereford 12-mo. -16-mo. bulls, AI sired by Final Answer, naturally sired by Grassy Run Presidente 2J, can be purchased w/or w/o papers, \$2,600. Jeremy Keen, 645 Fresh Rd., Newton, 25266; 304-685-2250.

Reg. Polled Hereford 12-mo. -15-mo. bulls, \$2,500-\$3,000. Butch Law, 192 Ruger Rd., Harrisville, 26362; 304-643-4438.

Angus based cows, 2, bred to PVF Marvel, due to calve 8/23/26, \$3,000. David McCardle, 153 Black Angus Lane, Moundsville, 26041; 304-830-9012.

Reg. Black Angus 12-mo. -15-mo. bulls, excel. EPD's, good disp., vacc., semen tested, \$3,200. Mark Robinson, 213 Willow Crk. Rd., Sutton, 304-678-7302.

Reg. Black Gelbvieh bulls, \$2,900/up. Roger Simmons, 309 Coaxley Ridge Rd., Harrisville, 26362; 304-628-3618.

Mini Jersey 11-mo. bull, polled, good disp., \$2,500. Amanda Stewart, 256 Ken Snyder Rd., Tunnelton, 26444; 304-282-2177.

Reg. Polled Hereford yrlg. calves, \$3,000/up. Caren Willie, 1478 Curtisville Rd., Smithfield, 26437; 304-290-0078.

Equipment Sales

No trucks, cars, vans, campers or other autos; backhoes (except 3-pt. hitch), dozers or other construction equipment; lawn equipment; no parts.

NH: 570 sq. baler, \$5,000; 565 sq. baler, \$4,000; 848 round baler, \$3,000; 256 hay rake, \$2,000; Case Int'l 8450 round baler, \$5,000; Hoelscher accumulator, \$4,000 Robert Atkins, P.O. Box 124, Talcott, 24981; 304-445-8736; ratkins789@gmail.com.

Hammermill Western Bearcat #7A, flat belt driven, \$1,800. John Belcher, 49 Land Cross Dr., Mt. Lookout, 26678; 304-859-8440.

Rural King '24 4 WD tractor, 24 hp w/ front bucket, hydrostatic, 3-pt. hitch w/finish mower, 20 hrs., \$11,000/neg./partial trade. Larry Blankenship, 90 Central Dr., West Hamlin, 25571; 304-840-2626.

RK25 tractor w/loader, scraper blade, new 4' brush hog, quick release hay mover w/spear,

93 hrs., \$14,500. Clyde Buckmon, P.O. Box 233, Fayetteville, 25840; 304-663-7833.

Kubota '13 7040, cab, tractor w/loader, 54 hrs., excel. cond., \$48,000. Rick Cavender, 51 Lochlaven Lane, 25071; 304-965-7306.

Kuhn GMD 500 multi disc mower, \$2,000. Neil Chenoweth, 3010 Parsons Rd., Elkins, 26241; 304-636-5310.

King Kutter 6' finish mower, excel. cond., \$1,000. Russell Cyrus, P.O. Box 965, St. Albans, 25177; 304-951-2349.

Kodiak 5' brush hog, 3-pt., excel. cond., \$1,600. Robert Danko, 2538 Freedom Hwy., Fairmont, 26554; 304-534-3538.

Hay elevator 20' long, elec., \$500. Jim Delinger, 2365 Butcher Bend Rd., Mineral Wells, 26150; 304-481-4557.

Minos Agri T-SR 1850, 6', fixed position rotary tiller, excel. cond., \$2,000. Richard Doheny, 9806 Tuckers Crk. Rd., Elizabeth, 26143; 412-956-0180.

JD 5055E, 4 WD, canopy, 1,900 hrs., 80% front tires, 65% back tires, excel. cond., \$28,000. Steve Feaster, 44 Buckhannon Lane, Keyser, 26726; 304-790-2999.

MF '18 1730E tractor, manual, 39.5 hp, 6,456 hrs., includes brush hog, standard forks & scraper attachments, ECU was replaced by AGCO 11/25, serviced 2/25 which included fuel & air filters, service kit, burner insert & glow plug, \$18,500. Kris Franca, 86 Flat Top Lake Rd., Ghent, 25843; 971-275-3885.

King Kutter II 6' rotary tiller gear drive, TG-72-YK, \$2,000; Reese 15K 5th wheel hitch, \$350, both good cond. Karen Grafton, 1348 Egypt Rd., Lookout, 25868; 304-663-8501.

Ford 1620 tractor w/60" mower deck, 1,940 hrs., \$7,800. Ellen Harsh, 855 Breed Love Rd., 26716; 304-735-5468.

Moldboard MH216 plow, 2, 16" bottom, category 1 3-pt. hitch, shed kept, excel. cond., \$600; Big Red 682 horse tiller, rear tine mower, includes wheel wts., furrower plows, shed kept, excel. cond., \$1,100. Randy Harvey, 287 Cloverfield Lane, Lewisburg, 24901; 304-647-4135.

Ford 601 tractor, excel. rear tines, new chains on the back, \$2,000; hit & miss engines, good cond., \$800. Dan Hays, 421 Snyder Loop, Kingwood, 26537; 304-290-9052.

JD: 625 mower conditioner, \$13,000; 338 sq. baler, \$3,180; baler w/net wrapper, \$21,500; 702 carted wheel rake, \$1,900; McHale 991B bale wrapper, \$13,700; Krone KW5 hay tedder, \$7,900. Betty Hendrick, 4048 War Ridge Rd., Wayside, 24985; 304-573-1008; bjhpvfarm@aol.com.

Grain elevator, 16', elec. tie, good cond., \$500. Clark Humphreys, 7217 Indian Mills Rd., Peterstown, 24963; 304-753-9990.

JD, 4 WD, ps, 39 hp, 500 hrs., grader blade, barn kept, excel. cond., \$14,000. Bruce Hunt, 202 Joy Lane, Culloden, 25510; 304-205-2483.

WoodMaxx FM 8600 backhoe, 3-pt. hitch, 2 buckets, \$6,500; bucket hay spear, \$100. Rusty Livingood, 3051 Little Sandy Rd., Bruceton Mills, 26525; 304-692-9979.

Int'l: TD9 w/dear wench, \$1,450; 6½' disc, 3-pt. hitch, \$2,750; MF 6' sickle bar mower, \$2,850; bush hog, 5', \$1,450; horse drawn plow, corn planter & potato plow, \$325/ea.; Western 8½' plow, \$1,850. Ron Malus, 3445 Snake Run Rd., Alderson, 24910; 304-392-5231.

Skid steer 6' bucket, excel. cond., \$1,175. Lonnie Martin, 219 Sinsel Lane, Independence, 26374; 304-265-2764.

NH '14 baler, Land Pride rotary cutter, RC2512 series batwing mower, \$1,500. Harley McClung, 16910 Webster Rd., Craigs ville, 26205; 304-742-3733.

Minos AGR 7' disc mower, shed kept, ready for the field, \$3,000. Clarence Mount, 149 Dunfee Rd., Lesage, 25537; 304-762-2565.

NH 310 sq. baler, well maintained, kept covered/inside since last used last in '11, clean, solid and ready for work, \$2,500. Garry Norton, 2671 Brushy Fork Rd., New Milton, 26411; 304-873-2311.

Kuhn GF5001THA hay tedder, hyd. lift, excel. rubber/cond., \$4,000. Dwayne O'Dell, 304-565-9301.

Ford 542 sq. baler, \$500. Ronald Omgs, 261 N. Texas Rd., Augusta, 26704; 304-790-3817.

Ford 3000 tractor w/loader, diesel, needs some work, \$3,500. Royce Plaughner, 205 Anthill Lane, Petersburg, 26748; 304-668-4244.

Ford: 3910 tractor w/3209 front loader, bucket, pallet forks, original paint, barn kept, wet lines on the back, canopy top, 2,750 hrs., \$15,000; NH 07' TT60, 60 hp, farm tractor w/loader, 1,000 hrs., good cond., \$19,000. Homer Plumley, 351 Plumley Mtn. Rd., Shady Springs, 25918; 304-573-8799.

JD 530 manure spreader, good cond., \$1,500. Raymond Reedy, 292 Grit Rd., Buffalo, 25033; 304-937-3113; 304-546-4578.

JD 335 baler, 4x4 round bales w/elec. tie, new belts, barn kept, \$1,000; Int'l 35 side delivery rake, good cond., \$350; hay tedder, 12' reach, \$350, all good cond. M. Shupp, 1651 Stalnaker Rd., Philippi, 26416; 304-457-1063.

Minosute 460 6½' disc mower, \$3,000. Clem Smith, Box 149 Jumping Rd., Lesage, 25537; 304-762-2565.

Farmall '52 Super M tractor, 6 volt, barn kept good cond, \$4,000. Linda Staddon, 1073 Cheat Rd., Morgantown, 26508; 304-594-3332.

Ford '49 8N tractor good cond., \$800. Ken Snyder, 256 Ken Snyder Rd., Tunnelton, 26444; 304-282-3535.

Vicon round baler, string elec. tie: 1500, 5x6 bales, \$1,000; 12, 4x6 bales, \$1,250; MF 4-wheel hay rake, \$150; Enorossi, 4 wheel hay rake, \$12,000 all excel. cond/shed kept; Ford heavy duty back grader blade, \$100; rear scoop bucket, 3-pt. hitch, \$400. Jim Summers, 305 Centenary Rd., Bruceton Mills, 26525; 304-379-3815.

Ditch 'Witch trencher '95 1820 plus trailer, 5,000. Tom Wilson, 12621 Charleston Rd., Leon, 25123; 304-675-5724; 304-674-1866.

Plows, 10", 4, to fit small lawn & garden tractor w/ a disc, \$50/ea. Tressi Wilson, 2118 Gains Rd., Rock Cave, 26234; 304-924-6951.

Farm Wants

Looking to buy sm. 3-4 A. farm w/house, water/elec., prefer sm. pond in Logan, Boone, Mingo & Wyoming Co. Linda Fraley, 976 Cleveland Rd., Hacker Valley, 26333; 304-483-9411.

Looking for 5+ A. family farm to preserve, TLC or conservation easement, for fruit growing in Monongalia Co. Vivien Haley, 1222 Awman Rd., Bruceton Mills, 26525; 681-270-1217.

Goat Sales

Reg. 100% NZ Kiko: 3 bucklings, \$225/ea.; 2 bucks, proven sires, \$750/ea.; 2 pure kiko bucklings, \$175/ea.; 2 commercial bucklings, \$125/ea., all hardy, pasture raised in Mason Co. Everett Arthur, 1253 Keefer Rd., Leon, 25123; 304-593-0991; arthurmountainfarmsllc@gmail.com.

Pure 100% Boer 9-mo. -10-mo. bucks fully intact, dam & sire on the farm, good disp., \$165/ea. Charlene Meadows, 3650 Pluto Rd., Shady Springs, 25918; 304-222-7847.

Boer/Kiko 4-yr. doe & 1-yr. doe, mother & daughter, reddish brown, \$200/ea. or \$350/both; 1-yr. buck, white/black markings, solid, vacc./wormed, \$200/firm. Janet Wigal, 1182 Doctor Judy Rd., Parkersburg, 26101; 304-517-4921.

Kiko 3/26 bucklings after weaning, \$200/ea. Wade Stiltner, 213 Short Cut Branch Rd., Fort Gay, 25514; 304-272-5049.

Hog Wants

Tamworth or Duroc pigs at reasonable price, maybe 5 or 6 depending on price. Jessie Robinson, P.O. Box 175, 860 Bays Rd., Birch River, 26610; 304-649-4012.

Horse Sales

Tenn. Wlkr. 1-yr. stud colt, spotted, \$1,800. Mike Roach, 459 George Roach Rd., Lesage, 25537; 304-840-7170.

Horse Wants

Donkey male or female. Gene Reynolds, 310 Varner Rd., Walker, 26180; 304-679-3955.

Plant Sales

Heirloom seeds: Amish Pink Sweetmeat tomato; Kellogg Breakfast yellow tomato, both, \$3/35 seeds, **plus** SASE. Max High, 8508 Patterson Crk. Rd., Lahmansville, 26731; 304-851-0401.

Poultry Sales

Pullets brown egg layers, \$12/ea. Chris Denham, 6184 Dallas Pike, Triadelphia, 26059; 615-498-8658.

Sheep Sales

Katahdin reg. & NSIP 4-yr. ram, \$800. Kayla Campbell, 18 Lapoe Village, Core, 26541; 304-288-4280.

Katahdin ram lamb, all white, black hooves, sired by 2025 Va Tech Ram Study 1st place ram #107, had 0 barber pole FEC during the study. highest ADWG, fastest growth, dam has not

required worming for 2-yrs., \$750. Gene Glover, 1098 Terry Ave., Oak Hill, 25901; 252-230-8957.

Dorper/St. Croix cross, 4, twins; pure Dorper, 3, all ewes/black headed, \$300/ea. Bernice Taylor, 558 Barnes Run Rd., Sandyville, 25275; 304-273-0704.

Katahdin, commercial use, \$150. Dalen Whitt, 211 Carroll Hill Rd., Lewisburg, 24901; 304-497-2425.

Miscellaneous Sales

No riding habits or other clothes; appliances or furniture; antiques or crafts; hand power tools or equipment; food processing or preservation items or equipment; general wood working tools; firewood. Only dogs recognized by the AKC will be accepted.

Trailer, '02 Gore 4 horse, excel. cond., \$10,000. Robert Atkins, P.O. Box 124, Talcott, 24981; 304-445-8736; ratkins789@gmail.com.

Hay, '25 1st cut sq. bales, never wet, mixed grass, barn kept, \$4.50/bale. Roscoe Beall, 1648 Cortland Rd., Davis, 26260; 304-866-4188; 304-290-2160.

Hay, round bales, barn kept, never wet, off I-79, \$3/bale; mulch hay, \$20/bale, both easy load. Rick Campbell, 3003 Servia Elmira Rd., Duck, 25063; 304-644-4260; 304-881-1615.

Border Collie, adults, Old Lassie collie, sable & white, \$250/ea. Kevin Cummings, 110 Walnut St., Evans, 25241; 304-372-8615.

Water wheel transplanter for raised or flatbed application, 150-gal. tank, 6 planting wheels included, plant distance 6" and up, \$2,600; plastic mulch lifter, easy to adjust to lift 3 or 4" plastic mulch from field, \$2,100. Blaine Fike, 22672 Aurora, 26705; 304-612-5362; bjfike@yahoo.com.

Trailers, '23 Shadow Stable Made 2 horse slant load, all alum., excel. cond., \$9,000. Dwight Huffman, 7976 Blue Lick Rd., Greenville, 24945; 540-726-7577.

Metal 55-gal. barrels, \$15/ea. Peggy Jones, P.O. Box 2074, Shady Springs, 25918; 304-763-4167.

Hay, 4x5 round bales, orchard/timothy/clover, limed/fert., stored inside, \$45/bale. Rusty Livingood, 3051 Little Sandy Rd., Bruceton Mills, 26525; 304-692-9979.

Trailer, single axle w/removable cattle racks, bumper pull, \$15,000; crock, 10-gal., \$135. Ron Malus, 3446 Snake Run Rd. Alderson, 24910; 304-392-5231.

Hayfield for lease, 29A. plus opportunity for additional hayfields, prime location, flat ground containing orchard grass, timothy & clover, portion of field has been reseeded, limed/fert., the lessor retains \$10-\$14/bale. Melody Melrose,

193 Sycamore Run Rd., Mineral Wells, 26150; 304-482-6089.

Hay, 4x4 round bales, mixed hay, barn kept, \$30/bale. Allen Miller, 946 Cuzzart Mtn. Dale Rd., Bruceton Mills, 26525; 304-379-9717.

Fresh goat milk, \$5/qt. Justin Miller, 1696 Green Valley Rd., Peterstown, 24963; 330-852-3939.

Hay, '25, 1st cut, 4x4 round bales, mixed hay, barn kept, never wet, 6½ miles off I-79, Saltwell exit, will load, \$35/bale. David Nuzum, 2086 Adamsville Rd., Shinnston, 26431; 304-669-3516.

Hay, 4x5 round bales, string wrapped, \$35/bale. Royce Plaughner, 205 Anthill Lane, Petersburg, 26847; 304-668-4244.

Wooden wagon, very old w/ long tongue on front, barn kept, \$500. Alan Rudley, 441 Falling Springs Farm Rd., Renick, 24966; 304-497-2261.

Trailer, '98 custom horse tires are older but have good tread, kept under cover, extra wide/tall, needs new wiring, \$2,800. Ken Stewart, 256 Ken Snyder Rd., Tunnelton, 26444; 304-282-3535.

Flatbed wagons, various lengths, \$300-\$1,000/ea.; silage box wagons, 2, w/fall in gate, A 1 loading, \$400 & \$600, all shed kept/good cond.; 1,000 lb. capacity Carter Calf Creek feeders, \$800/ea. Jim Summers, 305 Centenary Rd., Bruceton Mills, 26525; 304-379-3815.

Hay, 4x5 round bales; straw, \$20/bale/ea. Tom Wilson, 12621 Charleston Rd., Leon, 25123; 304-674-1866.

Trailer, '06 Corn Pro, gooseneck, stock, 16'x80" wide, 6,000 lb. axles, gray in color, good cond., \$8,900. Randell Tribble, 5258 Beech Fork Rd., Leon, 25123; 304-912-8333.

Raw fleece: Border Leicester & crosses w/ Finn Teeswater & Kerry Hill, Baby Doll South-down, natural colors, free to \$50 for entire fleece; spinning wheels, \$300/ea. Linda Zinn 2162 Skelton Run, Wallace, 26448; 304-782-3704.

Miscellaneous Wants

Pure Aust. Shep. male puppy or young dog. Denise Binton, 575 Smith Rd., Flemington, 26347; 304-669-0247.

Donkey for livestock guard animal, prefer background w/sheep or goats, Peter Dodgion, 868 Balagee Branch, Wayne, 25570; 304-360-8209.

Want to buy cow manure, reasonable distance of Charleston. Larry Mullins, 135 Eastpoint Dr., Charleston, 25311; 304-546-7072.

Pasture & Hayfield Spraying

Herbicides, liquid fertilizers, lime & soil sampling

Contact Dennis Burns, 304-646-2779.

WVDA BUG BUSTERS

▶ See a potential invasive pest?

Send a photo of the pest with your name and contact info to bugbusters@wvda.us or call 304-558-2212.



THE MARKET BULLETIN
WV Department of Agriculture
Kent A. Leonhardt, Commissioner
1900 Kanawha Blvd East
Charleston, WV 25305-0170
MAY 2026

Non-Profit Organization
U.S. Postage Paid
Permit 80
Charleston, WV 25301

RETURN SERVICE REQUESTED

JOIN OUR *Market Bulletin List!*

Subscribe to the WVDA Market Bulletin
to get the latest news and updates.

marketbulletin@wvda.us or 304-558-3708
Both electronic and print subscriptions available.



West Virginia DEPARTMENT OF
AGRICULTURE
COMMISSIONER, KENT A. LEONHARDT



Articles in this publication may be reprinted, with the exception of advertisements, when a credit by-line is given to the West Virginia Department of Agriculture. The use of trade names in this publication is for purposes of clarity and information only. No endorsement is made or implied of any product, or is it implied that similar products are less effective. Statement of Policy Regarding Equal Opportunity and Participation in Programs: It is the policy of the West Virginia Department of Agriculture to provide its services and programs to all persons without regard to sex, race, color, age, religion, national origin or handicap.

COMMUNICATIONS DIRECTOR: Beth Southern • EDITOR: Jennifer Smith Poling • Designer: Brooke Francke • Contributor: Carrie McCracken