

THE MARKET BULLETIN

“TELLING THE STORY OF WEST VIRGINIA AGRICULTURE”

KENT A. LEONHARDT, COMMISSIONER

www.agriculture.wv.gov

JOSEPH L. HATTON, DEPUTY COMMISSIONER

Home at the Range

Riffle Farms Releases Bison Cookbook

APRIL 2022
VOLUME 106, NO. 4



Liz Riffle has a full plate. The mother, farmer and Navy veteran is about as busy as they get. She and her husband Jimmie, an active-duty Navy nurse practitioner, purchased 64 acres in Preston County in 2017 to raise bison. They started out with seven animals. Today, they're up to 35 with 10 calves expected this spring. But her newest baby comes in the form of a cookbook she's been working on for several years titled *Simply Bison: Curated Recipes*.

"The first question I always get when folks find out we raise bison and sell our own meat is, "How can I buy some?" The second question is, "Can I come see the bison?" It's always followed by "How do I cook it," laughs Liz.

She admits, bison is not the easiest meat to master. Cook it too long, and it winds up tough and inedible. Cook it just right, and it's mouthwatering.

"The nice thing about bison is it's super sweet. It has a lot of flavor. Bison has less fat than chicken, more protein than salmon and more omega 3 fatty acids than even grass-fed beef," explains Liz.

The one problem she encountered was most of her customers had no idea how to cook with bison outside of slapping it on the grill or frying up some burgers.

"I started creating recipes and putting them on my website and my blog. Then we created recipe cards to take with us to farmers' markets. So, finally I was like I'll just do a full-on cookbook, make it something pretty and presentable, something folks can open up and start to cook," says Liz.

The Riffle's already had a handful of family recipes they loved to cook. They began taste testing some new creations and used a few recipes Liz picked up from other bison farmers with her own spin. It added up to 24-pages of recipes, facts about bison and the farm in general.

"I've seen a lot of creative recipes with bison, but they tend to take a lot of time in the kitchen. You've got to know what you're doing to pull them off. That's why we kept our recipes simple, something that's easy to follow," explains Liz. "If you're new to bison, don't like to spend a lot of time in the kitchen or don't have time to fix something, these recipes are pretty simple. The cook time is anywhere from 45 minutes to six hours if you put the bison in a Dutch oven that slow cooks it. But the prep time is 10 minutes to at most 25. We want to get healthy food on the table for busy people."

One of the recipes you'll find in the book (and on our What's Cookin' page) is something Jimmie came up with.

"I really like the mozzarella stuffed meatballs," shares Liz. "They're really fun to make and absolutely delicious. It's a crowd favorite. You can just do the meatballs by themselves as an appetizer, you can put them in spaghetti or put them on a sandwich. The nice thing is you can make a bunch of them, eat half of them now, freeze half of them for a meal later in the week. It's a really versatile recipe, one of our favorites."

To get your hands on a hard copy of *Simply Bison: Curated Recipes*, you can order it from the Riffle's website, rifflefarm.com.

"I also just finished up the e-edition of the book. A lot of people I know don't use a book

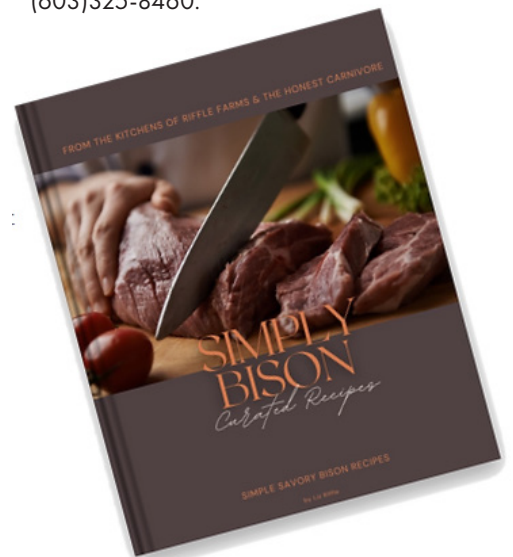
anymore. They like to have it on their Kindle or iPad when they're working in the kitchen. You can find the e-edition on our website as well," says Liz.

The Riffles sell their bison at the Deep Creek farmers' market in Maryland, several stores in Virginia Beach where Jimmie is stationed and from their store on the farm in Terra Alta. Store hours are 11 a.m. to 5 p.m. on Saturdays. They hope to increase those hours later this year. The Riffles have even come up with a way for folks who don't cook to enjoy a bison-based meal.

"We do prepared meals with bison because some people are still uncomfortable cooking it for themselves," adds Liz. "We do bison chili, bison mac and cheese, bison empanadas and bison Bolognese. These are prepped and ready to go meals that you just have to warm up at home."

As for a follow up to *Simply Bison: Curated Recipes*, Liz doesn't rule it out. For now, she's focused on growing the herd and spreading the word about the health benefits of bison.

Riffle Farms is located at Salltick Road 5160 in Terra Alta. You can visit them online at rifflefarm.com or give them a call at (603)325-8460.





FROM THE COMMISSIONER:

Do your Part, Plant an Extra Row

Attention farmers, producers and home gardeners! As we set in motion our spring planting, we call on you to do your part to grow West Virginia's food resiliency by planting extra rows this year. Supply chain issues, inflation, the pandemic and the war in Ukraine have shown us the importance of creating an independent U.S. within the world market. History tells us that famine typically follows a pandemic and I fear, just like our energy sector, continued reliance on foreign nations for food will have dire consequences. We already have experienced what this could look like when prices and food scarcity skyrocketed during the beginning of the pandemic. We survived by shifting our focus towards local agriculture which led to all-time records for local food sales and meat processing. As we look for ways to foster growth through local agriculture, I am asking all producers to consider planting an extra row of something, anything commonly consumed in West Virginia.

As we saw production shift due to the pandemic, it became vital we not only support local producers but encourage average citizens to grow their own food. The strains on the food system we experienced in the early part of the pandemic were due to the closure of restaurants. Without these businesses, 30% of food we consumed in the United States was taken out of the marketplace. As restaurants

closed their doors, processing facilities had to focus on direct consumer production, increasing more strain on our grocers. These types of shifts do not occur overnight which caused a lag behind the increased grocery shopping. We are seeing the trend reverse as we shift back to our pre-pandemic lifestyles. Now inflation, supply chain issues and the rising cost of gas plague the U.S. economy.

Increased gas prices will accelerate consumer prices beyond what we are already seeing. Fuel is one of the most expensive inputs for many of our industrial sectors, including agriculture. Increased fuel prices have been one of the causes of the truck driver shortage. The pain the average consumer is seeing at the gas pump has much more serious downward ramifications in our food chains. Increased energy prices mean more expensive fertilizer which will reduce food production here and abroad. This will undoubtedly result in lower yields and, therefore, less food. For beef farmers this means less hay available which leads to fewer animals wintered and possibly younger and smaller animals sent to market. Less truckers, more expensive fuel and fertilizer and less production will put a damper on the national food system.

Now with the war in Ukraine, we can predict the breadbasket of Eastern Europe will not be able to produce exports as they have done in the past. This will likely put more pressure on food prices and increase shortages on a world

scale. If these conflicts continue, the United States will be asked to provide foreign aid which will include food. My military training has drilled into me the need to prepare for unforeseen circumstances. Foreign conflicts, pandemics and other emergencies are those scenarios. If we do not prepare, it will be our citizens who feel the pain.

As your Commissioner of Agriculture, I have advocated for investing in local foods since I took office five years ago; this includes branding programs such as West Virginia Grown, investments into infrastructure, as well as workforce programs. We must do more to support the 23,000 farmers in the Mountain State and the \$800 million worth of commodities they produce. The gap between local production and consumption continue to widen with no indication it will slow down. Relying on national and foreign food systems is not the future of our state. If we hope to make our state and economies as resilient as possible, we must invest inward. If our leaders will not act, I ask the citizens to do their part by planting an extra row this year. Your families, friends, neighbors and local food banks will appreciate your efforts.

Kent Leonhardt, Commissioner of Agriculture



2022 SAVE THE DATES

Veterans & Heroes to Agriculture Regional Gatherings

- > April 30th - Riffle Farms
- > May 21st - Vienna Indoor Aquaculture
- > May 15th - Hill 'n Hollow Family Farm and Sugarworks
- > June 25th - Sprouting Farms

Farm Tours | Workshops | Great Food | Networking | *More info to come!*

SEE A POTENTIAL INVASIVE PEST?

Send us a photo of the pest with your name and contact info to bugbusters@wvda.us or 304-558-2212.



Livestock Owners Need to Prepare for New FDA Guidelines

Changes are coming for West Virginia farmers and ranchers when it comes to over the counter (OTC) antimicrobials.

Come June 11, 2023, livestock owners will need a prescription from a veterinarian to purchase the few antibiotics that currently remain OTC. It's part of the Food and Drug Administration's (FDA) Veterinary Feed Directive that went into place in 2017. The intent of the new requirement is to ensure animal drugs that contain antimicrobials are not being overused or used incorrectly. These antibiotics are used in both human and animal medicine. There are concerns that misuse or overuse can cause antimicrobial resistance.

The drugs that currently fall into the OTC status but will need a prescription come June of 2023 include: Cephapirin and cephapirin benzathine, gentamicin, lincomycin, oxytetracycline, penicillin G procaine and benzathine,

sulfadimethoxine, sulfamethazine and tylosin. The new labels on these products will read, "Caution: Federal law restricts this drug to use by or on the order of a licensed veterinarian." This does not mean livestock owner will have to buy those antibiotics from their veterinarian, but you

will need a prescription from a vet to purchase them elsewhere.

WVDA Animal Health Division advises the new FDA labeling requirements will require animal owners to have an established veterinarian-client-patient relationship (VCPR) with a licensed veterinary practitioner in order to obtain a prescription to purchase antibiotics. According to regulations, such a relationship can only exist when the veterinarian is personally



acquainted with the keeping and care of the animals by virtue of examining them, including by medically appropriate and timely visits to the premise where the animals are kept. In addition to prescriptions, such visits could also assist overall herd health plans that can include vaccination programs, internal and external parasite control, nutritional and reproductive management, as well as establish a working relationship should an emergency arise such as trauma requiring treatment or birthing emergency requiring intervention.

The WVDA encourages livestock owners to establish a VCPR as soon as possible to avoid difficulties locating a private veterinary practitioner close to the deadline. More information on the upcoming antibiotic use changes is available at [fda.gov/animal-veterinary](https://www.fda.gov/animal-veterinary).

4-H SPOTLIGHT

LEVI WRIGHT

AGE: 18

4-H CHAPTER: TEEN COMMUNITY LEADERS (MASON CO.)

SCHOOL: MARSHALL UNIVERSITY

4-H ADVISOR: MISSY DEEM

Levi: I started out in 4-H Cloverbuds when I was five and joined 4-H when I was nine. I started showing pigs as soon as I could. I didn't really know what I was doing, but I watched my older sister and followed her lead. I learned from my mistakes and got better every year. We would always buy our show pigs from other people and then sell them after we showed them. But two years ago, I decided to start breeding them myself. We have about eight sows and 40 little ones. That keeps us very busy. We sell to anyone looking for a fair pig. We sell to folks in Mason County, also in Gallia County, Ohio. We raise crossbred pigs. They're the best option for showing. I'm really proud of this project. The first year we were in business, one of the pigs we sold won grand champion at the Mason County Fair. That's rewarding! We call the business Wright Farm and we do most of our sales from word of mouth or Facebook.



What's Cookin'?

APRIL 2022

Bison Bites!

If you've never tasted bison, you're missing out! Sometimes called "America's original red meat," bison is packed with protein and is very lean. It also has fewer calories than most red meat. Liz Riffle and her husband raise bison and sell the meat on their farm in Terra Alta (see our cover story). She's shared one of her favorite recipes that you can find in her newly released cookbook *Simply Bison: Curated Recipes*. To make the meal complete, why not try out a ramp recipe (they're in season this month and next) and pair it with some potatoes. If you have a recipe you'd like to share, send it to marketbulletin@wvda.us.

MOZZARELLA STUFFED BISON MEATBALLS

Serves: 6

Cook Time: 10 mins

Ingredients

1 1/2 lbs ground bison
 1/3 cup breadcrumbs
 1 tsp salt
 1/2 tsp pepper
 1/2 tsp garlic powder
 1/2 tsp dried oregano
 1 egg
 2 tbsp water
 6 oz mozzarella cheese
 (cut into 1/2 in cubes)
 3 cup marinara sauce, warmed
 2 tbsp chopped fresh parsley

Directions

- 1 Preheat the broiler. Line a sheet pan with foil and coat the foil with cooking spray.
- 2 Place the bison, breadcrumbs, salt, pepper, garlic powder, oregano, egg and water in a bowl; mix until thoroughly combined. You may need to add more water, 1 tbsp at a time, to get a smooth mixture.
- 3 Take approximately 2 tbsps of the meat mixture and roll into a ball. Press a cube of cheese into the ball of meat, making sure that the meat completely surrounds the cheese. Place the meatball on the sheet pan and repeat with remaining meat and cheese.
- 4 Spray the tops of the meatballs with cooking spray. Broil for 10 minutes or until meatballs are just done – do not overcook or the cheese filling may start to spill out.
- 5 Place the meatballs on a plate and pour the marinara sauce over the top. Sprinkle with parsley and serve immediately.



Sweet & Sour Ramps

- 1/2 pound (about a dozen) ramps
- Salt
- 3 tablespoons olive oil
- 3 tablespoons white wine or sherry vinegar
- 3 tablespoons light-colored honey
- Black pepper for garnish

Step 1

Clean the ramps or pearl onions and remove the leaves or green parts; use them for another recipe.

Step 2

If you are using pearl onions, boil them for 5 minutes in very salty water before proceeding. This softens them.

Step 3

Saute the ramps in the olive oil over medium-high heat until they brown, about 5 minutes.

Step 4

Add honey and vinegar and swirl to combine in the pan. Turn the heat down and simmer until the liquid reduces to a glaze, about another 6 to 8 minutes.

Step 5

Serve hot or at room temperature with some fresh black pepper.

Horseradish/Lemon New Potatoes

- 1/4 cup butter
- 1/2 teaspoon salt
- 1/4 teaspoon pepper
- 2 tablespoons prepared horseradish
- 2 tablespoons fresh lemon juice
- 1 1/2 pounds small new potatoes, unpeeled

Step 1

Preheat oven to 350 degrees F.

Step 2

Melt butter in a 2 quart casserole dish in the oven. Stir in salt, pepper, horseradish and lemon juice. Place potatoes in dish and toss to coat with butter mixture.

Step 3

Cover and bake in preheated oven for 1 hour, or until potatoes are tender.

Multiple Agencies Support WVDA Efforts for HPAI Outreach

Highly Pathogenic Avian Influenza has been confirmed in more than a dozen states in both backyard flocks and commercial poultry operations. Findings in migratory waterfowl surveillance continue, including states that have not had an outbreak in domestic poultry. WVDA along with supporting agencies and industry stakeholders have been promoting increased biosecurity, conducting enhanced surveillance, encouraging reporting sick birds and coordinating investigations with rapid sampling and laboratory testing. Since mid-February, WVDA field personnel have conducted multiple sick bird investigations with testing performed at Moorefield Animal Health Diagnostic Laboratory (MAHDL) which is a member of the National Animal Health Network (NAHLN). NAHLN labs are approved to conduct testing analysis for high-consequence animal diseases. This detects HPAI virus from sick bird investigations. Wild migratory waterfowl are the natural reservoir for avian influenza virus, which can spread to domestic birds and cause severe economic disruption for commercial poultry operations, including trade restrictions by countries around the world. Wild bird surveillance work continues by APHIS-Wildlife Services and WV DNR. Sick wild birds should be reported to WV DNR's regional offices.

BIOSECURITY IS CRITICAL!

HPAI Has Been Detected In Neighboring States

Poultry owners (large scale and small backyard flocks) need to:

- Practice good biosecurity.
- Wash your hands before and after coming in contact with poultry.
- Monitor your flock's health.
- Keep visitors to a minimum.
- Provide disposable boot covers and/or disinfectant footbaths for anyone having contact with your flock.
- **REPORT SICK BIRDS.** Call the West Virginia Department of Agriculture at **304-558-2214**.



For more information on biosecurity, scan the QR code.



Controlling infestations of spotted lanternfly in West Virginia

The spotted lanternfly (*Lycorma delicatula*, SLF) is an invasive insect that is spreading quickly in West Virginia. Native to southern Asia, spotted lanternfly was first detected in the United States in 2014. Fortunately, there are several practices that landowners can do to control the populations of this pest on their properties.

The spotted lanternfly has the potential to infest and damage many species of shrubs, trees and vines in West Virginia. However, the preferred host of the spotted lanternfly is also an invasive plant species called tree-of-heaven (*Ailanthus altissima*). Removing these plants from your property is important to decrease numbers of spotted lanternfly. Although the tree-of-heaven often exists as small trees and sprouts, it can grow to 70 or 80 feet. Because of a similar appearance, the tree-of-heaven is often mistaken with black walnut, butternut and several species of sumac. It is important to be sure that you have tree-of-heaven before removal because black walnut, butternut and sumac are native species that offer many ecological benefits and shouldn't be removed to decrease populations of spotted lanternfly.

Tree-of-heaven is best controlled by applying an herbicide. A hatchet or similar cutting tool is used to cut frills into the tree stem. The frills should be approximately one inch deep and spaced one to two inches apart in a ring around the tree stem. Herbicides may also be applied directly to the bark of the tree from the ground level to approximately 18 inches. Herbicide applications should be made between early July and the middle of October. Herbicides that may be used include Roundup and Pathfinder II. Please be sure to read the label carefully before the application of any pesticide.

When controlling tree-of-heaven, it is important to remember that simply cutting the plants at ground level will only cause them to produce copious amounts of root and stump sprouts. The proper application of herbicide, following the product label, is a vital part of controlling tree-of-heaven.

The spotted lanternfly is an excellent hitchhiker. When you travel to areas of West Virginia that do not have spotted lanternfly from areas with populations that do (Mineral, Hampshire, Jefferson and Berkeley Counties),



you not only risk introducing this pest into a new area of West Virginia but also risk introducing this pest onto your property where it can cause significant damage to your crops and trees. Spotted lanternfly hitchhikes a ride on vehicles, trailers and any item that is being transported. It is VERY important that you self-inspect your modes of transportation as well as all items being transported when traveling from an area having an infestation of spotted lanternfly. If you have property near a highway or railway, you need to be extra vigilant in examining your property for hitchhikers.

If you believe you have spotted lanternfly, the WVDA would like to know. To report your sighting, send an e-mail to bugbusters@wvda.us. If possible, please submit a photo. You can also call 304-558-2212.

West Virginia Grown

Rooted in the Mountain State



BARBOUR

- Sickler Farm
- Emerald Farms LLC
- Layne's Farm
- Kindred Hollow Farms
- Cellar House Harvest
- Mountain Meadows Farm

BERKELEY

- Appalachian Orchard Company
- Cox Family Winery
- Dunham Organics
- Geezer Ridge Farm
- Heron's Rest Farm
- Kitchen's Orchard & Kitchens Farm Market LLC
- Mountaineer Brand LLC
- Mountain Dogs LLC
- North Mountain Apothecary
- Raw Natural
- Romero Ranch
- Sister Sue's
- Sulphur Springs Stables - Orsini Farms LLC dba Warbirds Cattle & Farm
- Taylor's Farm Market
- US Veteran Produced
- Walnut Hill Farm
- West Virginia Pure Maple Syrup
- West Virginia Veteran Produced
- Wildflower
- Willow Bourne Farm

BRAXTON

- Mary's K9 Bakery LLC
- Oh Edith/Little Fork Farm
- Rose Petal Soaps
- Givens' Bison dba Mountain State Farm

BROOKE

- Bethany College Apiary
- Eric Freeland Farm
- Family Roots Farm
- Pike Vue Christmas Trees

CABELL

- Appalachian Apiculture
- Amandus Family Farm
- Auburn & East
- Good Horse Scents
- R&R Products dba Down Home Salads

CLAY

- Legacy Foods
- Ordinary Evelyn's
- Sparks Hilltop Orchard
- Sugar Bottom Farm

DODDRIDGE

- Sweet Wind Farm
- Ryan Farm

FAYETTE

- Appalachian Botanical Co LLC
- Deep Mountain Farm
- Five Springs Farm
- Five Springs Farm Guesthouse
- Wild Mountain Soap Company
- Butcher's Apiary
- Greenbrier Dairy LLC dba Almost Heaven Specialties dba Up the Creek
- Hughart Farms

GRANT

- Grace Brooke Greenhouses LLC

GREENBRIER

- Arbaugh Farm
- Caring Acres Farm
- Daniels Maple Syrup
- Dry Creek Farms
- Hero Honey - Valley View Farm
- Mountain State Maple & Farm Co.
- Sloping Acres
- T L Fruits & Vegetables
- Spring Creek Superior Meats LLC
- Eagles Landing Farm, LLC
- Sunset Berry Farms & Produce LLC
- Mike's Munchies
- The Hanna Farmstead
- Mt. Harmony Farm
- Mama Faye's
- Sunset Berry Farm & Produce LLC

HAMPSHIRE

- Kismet Acres Farm
- Good Time Ridge Farm
- Green Smith Farm
- Powder Keg Farms
- Quicken Farm
- Brushy Ridge Farm
- LDR Farm
- McDaniel Farms, LLC

HARDY

- Buena Vista Farm
- Happy Ranch Farm LLC
- Lonesome Ridge Farm Inc.
- Wardensville Garden Market
- Weese Farm
- South Branch Meat and Cattle Company LLC
- Sweet Rose Ice Cream Shop
- Williams Farms & Sweet Corn

HARRISON

- Native Holistics
- Sourwood Farms
- Honey Glen LLC
- Rimfire Apiary

HANCOCK

- Gibson Farm NC

JACKSON

- A J's Goats 'N Soaps
- Sassy Gals Gourmet Treats
- Cave Mountain Soap Company LLC
- Out of This World Salsa
- Overholt Homestead, LLC
- Boggess Farm
- Dean's Apiary
- Maddox Hollow Treasures LP
- One Blessed Farm LLC
- Layne Family Farmstead

JEFFERSON

- Shalgo Farm
- Appalachian Greens
- The Grass is Greener Farm LLC

KANAWHA

- Angelos Food Products LLC
- Appalachian Abattoir
- Country Road House and Berries
- Hamilton Farms, LLC
- Happy Hens Farm
- Hernshaw Farms LLC
- Jordan Ridge Farm
- Larry's Apiaries
- Lem's Meat Varnish
- T & T Honey
- Vandalia Inc.
- We B Fryin Snacks LLC
- Piddlin' Rooster LLC/Tipsy Roo's
- McCutcheon's Rub Company
- Mallory Family Farm
- Oh My Greens

LEWIS

- Garton Farms
- Lone Hickory Farm
- Novak Farms
- Smoke Camp Craft

LINCOLN

- Anna Bell Farms
- Hill n' Hollow Farm & Sugarworks
- Estep Branch Pure Maple Syrup
- Berry Farms
- J & J Bee Farm
- Justice Farms
- Wilkerson Christmas Tree Farm
- Ware Farms
- Simply Hickory
- Ronk Family Farm

MARION

- Clutter Farms LLC
- Holcomb's Honey
- Rozy's Peppers in Sauce
- Anderson Hollow

MARSHALL

- Eco-Vrindaban Inc.
- American Pie

- Gopi Meadows
- Hazel Dell Farm
- NJ's Kettle Corn
- Struggling Acres Farm
- Providence De Fleur

MASON

- Black Oak Holler Farm LLC
- Hope's Harvest Farm LLC
- Molly Goat Soap
- Moran Farms
- Pure and Simple Sunset Farm

MERCER

- Beautiful Bee
- Hillbilly Farms

MINERAL

- Green Family Farm
- Indian Water Maple Company

MONONGALIA

- Neighborhood Kombuchery
- The Kitchen
- WVU
- Boone's Bees and Trees
- Sonny's Peppers

MONROE

- Bee Green
- Clean Acres Farm
- Greenville Farm Kitchen
- Spangler's Family Farm

MORGAN

- Glascock's Produce
- Mock's Greenhouse and Farm

NICHOLAS

- Dave's Backyard Sugarin'
- Kirkwood Winery
- White Oak Acres
- Woodbine Jams and Jellies, Inc.
- Country Roads Farm

OHIO

- Beeholding Acres/Roth Apiaries
- Fowler Farm
- Grow Ohio Valley
- Moss Farms Winery
- Rock Valley Farm
- The Blended Homestead
- Windswept Farm
- Zeb's Barky Bites
- Windswept Farm

PENDLETON

- Brushy Mountain Tree Farm LLC
- Blackthorn Estates Nursery
- Cool Hollow Maple Farm
- M & S Maple Farm
- Rocky Knob Christmas Tree Farm
- Wildmour Farm
- Dean's Gap Farm, LLC
- Swilled Dog

POCAHONTAS

- Brightside Acres, LLC
- Brush Country Bees
- Frostmore Farm
- Wilfong Farms
- Hillsboro Maple Works LLC / Swan Farm
- Bev's Best

PRESTON

- Andor Peppers
- Me & My Bees LLC
- Maryland Line Farm
- Mountindale Apiaries
- Possum Tail Farm
- Riffle Farms LLC
- Ringer Farms
- Taylor Grow LLC
- The Vegetable Garden
- Touch of Greens Farms
- Valley Farm Inc.
- Vested Heirs Farm

PUTNAM

- Gritt's Farm
- Gritt's Midway Greenhouse
- Sycamore Farms & Primitives
- Taste of Country Candles
- WV Ridgerunner Honey LLC
- Morgan Farms DBA Country Roads Hemp

RALEIGH

- Appalachian Kettle Corn
- Bailey Bees
- Daniel Vineyards LLC
- Shrewsbury Farm
- The Farm on Paint Creek/
Sweet Sweeneysburg Honey
- Timboksue Farms

RANDOLPH

- Poe Run Craft & Provisions Inc.
- The Bryer Patch
- WV Wilderness Apiaries
- Soggy Bottom Farm & Nursery
- S & T's Bees

RITCHIE

- Turtle Run Farm
- Five Star Beef Co.

ROANE

- Christian Farm
- Grandma's Rockin' Recipes
- Missy's Produce

SUMMERS

- Cheyenne Farm
- Sprouting Farms
- Genesis Mountain Farm LLC

TAYLOR

- A Plus Meat Processing
- Triple L Farms
- Hidden Meadow Farm LLC

TUCKER

- Mountain State Honey Co. LLC
- R&A Honey Bees LLC
- Seven Islands Farm LLC

TYLER

- Cedar Run Farm
- Creekside Farms
- Uncle Bunk's

UPSHUR

- Appalachian Acres Inc.
- Lucky Lucy Farm

- Mountain Pride Farms LLC
- Mountain Roaster Coffee
- Old Oak Farms
- Zul's Frozen Lemonade, Inc.

WAYNE

- Elmcrest Farm
- LC Smith LLC dba Lovely Creations
Handmade Soaps and More
- Stiltner's Apiaries

WEBSTER

- Custard Stand Food Products
- Copperhead Row Hemp Farms WV, LLC
- Spillman Mountain Farm Products, Inc.
- Williams River Farm
- Dolar Rancho High Tunnel

WETZEL

- Thistledeew Farm Inc.
- Wetzel County Farmers Market

WIRT

- Appalachian Willows
- Riverbend Farms & Gardens
- White Picket Farm LLC
- Stone Road Vineyard

WOOD

- IN A JAM! LLC
- Minner Family Maple Farm LLC
- Community Resources, Inc. - Hope Grows
- Stomp-n-Grounds Craft Coffees

WYOMING

- Appalachian Tradition
- Tarbilly's BBQ

What is West Virginia Grown?

West Virginia's people take a lot of pride in their heritage. Our farmer and producers are no exception – although they certainly are exceptional.

Developed in 1986, West Virginia Grown was designed to market West Virginia grown and made products to consumers. By placing the West Virginia Grown logo on a product, they are assuring buyers that product was grown or processed, with quality ingredients, in the Mountain State.

More Information:

304-558-2210

wvgrown@wvda.us

<https://agriculture.wv.gov/ag-business/west-virginia-grown/>



2022 WV FFA Ham, Bacon and Egg Sale and Show *Breaks Record*

The West Virginia FFA Ham Bacon and Egg Sale and Show drew a big crowd to Cedar Lakes Conference Center on March 14, and it turned out to be a record-breaking night. The sales total for the evening was \$68,617.

The annual sale began back in 1941 and took place at the Daniel Boone Hotel in downtown Charleston. The Grand Champion ham that first year went for \$204.82. This year, Garrett Ammons' Grand Champion ham sold to Kroger for \$11,500, a new record.

WVDA Commissioner Kent Leonhardt was on hand for the sale to cheer on the FFA members.

"After two years of Covid, it was great to host the State FFA HBE Show and Sale in our new Cedar Lakes Assembly Hall. We saw record sales with every penny going back to the young men and women who were here tonight. Not only have these young people learned how to raise and process an animal, they also experience how hard work can pay off," stressed the Commissioner.

Since 1941, the annual sale has raised more than \$1.4 million dollars for FFA students. Ron Morrison and Greg Murphy of Ronald Morrison Auction Services donated their time to auction off the items.

RESERVE CHAMPIONS



The Reserve Champion ham, raised by Austin Burley of Hundred FFA, weighed in at 24 lbs. and sold to Kroger for \$4,800.

GRAND CHAMPIONS



The Grand Champion ham, raised by Garrett Ammons of Tyler FFA, weighed in at 23 lbs. and sold to Kroger for \$11,500 (a new record).

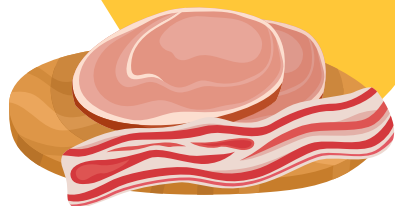


The Grand Champion bacon, raised by Elizabeth Paden of Tyler FFA, weighed in at 7.5 lbs. and sold to Pierson Lumber for \$3,000.



The Reserve Champion Bacon, raised by Hayden Ammons of Tyler FFA, weighed in at 8 lbs. and sold to Union Bank for \$1,080.

Congratulations to all the Winners!



The Grand Champion Eggs were sold to Kroger for \$5,000. They belonged to Alaina Lucey of Cameron FFA.



The Reserve Champion Eggs were sold to THQ Appalachia, Broke-Ass Farms and Jack and Sharon Lucey for \$3,000. They belonged to Alaina Lucey of Cameron FFA.

CLASSIFIED ANNOUNCEMENTS APRIL 2022

To Submit
an Ad: ▶

Phone: 304-558-2225
Fax: 304-558-3131
Email: marketbulletin@wvda.us
Mail: 1900 Kanawha Boulevard, E.
Charleston, WV 25305

May 2022. . .

Phone-In ads for the May issue must be received by **12 noon on Thursday, April 14.**

Written ads for the May issue must be received by **1 p.m. on Friday, April 15.**

June 2022. . .

Phone-In ads for the June issue must be received by **12 noon on Thursday, May 12.**

Written ads for the June issue must be received by **1 p.m. on Friday, May 13.**

To subscribe to *The Market Bulletin*, email marketbulletin@wvda.us or phone 304-558-3708.

Apiary Sales

Honeybees: 3# package w/market queen Italian; \$132.50; Russian, \$137.50. Stephanie Bender, 119 Third St., Elkins, 26241; 637-2335.

Bee jackets w/hoods, 1 sm. & 1 med. full suit, 1 deep, 6 med. & 12 shallow supers, all w/frames & FDN, most frames have drawn combs, misc tools & supplies, \$400/all. Larry Nottingham, 334 Chapman Rd., Duck, 25063; 618-0132.

Bee boxes, 10-frame solid bottom board, hive body, med. super, inner lid w/cover & metal w/frames, \$130/ea. James Wayne, 1425 Loundendale Lane, Charleston, 25314; 342-1273.

Apiary Events

Clay Co. Beekeepers Assoc., Monthly Meeting, 2nd Monday, 6:00 p.m., Big Otter Community Center, Contact Mark Davis, 543-5955; mdavis@dgoc.com.

Clay Co. Beekeepers Assoc., Basic Beekeeping Class, April, 11, 18 & 25, Contact Mark Davis, 543-5955; mdavis@dgoc.com.

Barbour Co. Beekeepers Assoc., Monthly Meeting, 4th Thursday, 7:00 p.m., Barbour Co. Fairgrounds in metal quonset hut, Contact Dave Hunt, 456-4500.

Kanawha Valley Beekeepers Assoc., Bi-Monthly Meeting, 3rd Sat., 10:30 am-1 p.m., Contact Steve May 727-7659.

Marion Co. Beekeepers Assoc., Monthly Meeting, 4th Thursday, 7 p.m.-8 p.m., Eldora UMC, Fairmont, Contact Nancy, 612-9699.

Monongalia Beekeepers Assoc. Classes, April 2 & 9, 10 a.m.-3 p.m., Monongalia Co. Ext. Office, 270 Mylan Park Lane, Morgantown or online at moncountybeekeepers.org, Contact, Debbie Martin, 367-9488; debbee7@yahoo.com.

Mountaineer Beekeepers Assoc., Bi-Monthly Meeting, 2nd Monday, 6:30 p.m., Ritchie Co. Library, Contact Justin King, pjstinking@gmail.com.

Mountaineer Beekeepers Assoc., Discussion Meeting, 4th Thursday, 6:30 p.m., Doddridge Co. Library, downstairs meeting room, Union, Contact Justin King, pjstinking@gmail.com.

North Central WV Beekeepers Assoc., Monthly Meeting, April 19, 6 p.m.-8 p.m. Harrison Co. Parks & Recreation Complex, 43 Recreation Dr., Clarksburg, Contact Hudson Snyder, 641-7845.

Potomac Highlands Beekeepers Assoc., Monthly Meeting, 2nd Thursday, 7 p.m., Sept. Bank of Romney Community Center on Main St., Downtown Romney, Contact Kirby Vining, 202-213-2690; secretary.phba@gmail.com.

Tri State Beekeepers Assoc., Monthly Meeting, 3rd Thursday, May., 6:30 p.m., Good Zoo Bldg., Oglebay Park, Wheeling, novice classes begin Feb. 22, Contact Steve Roth, sroth29201@comcast.net.

All bee colonies must be registered with the West Virginia Department of Agriculture. Please contact the Animal Health Division at 304-558-2214.

Cattle Sales

Reg. Hereford 12-mo. - 13-mo. bulls, Revolution 4R Hometown 10Y blood, \$1,800. Ron Brand, 794 Sugar Grove Rd., Morgantown, 26501; 983-8004.

Black Angus yrlg. bulls & heifers, Conley & Granite blood, \$900/ea. Roger Collins, 26984 Leading Crk. Rd., Big Springs, 26137; 354-7744; after 5 p.m.

Black Angus bulls, good disp., semen tested, low birth EPD's, \$2,200. Cliff Crane, 143 Spiker Rd., Bruceton Mills, 26525; 379-4482.

Reg. Polled Hereford yrlg. bulls, good markings, dark red, Revolution blood, \$2,000/up. Bobby Daniel, Box 214, Fairdale, 25839; 575-7585.

Feeder calves, 400-600 lbs., \$1.60/lb./up. Tom Darby, 1156 Prison Rd., Bruceton Mills, 26525; 698-8560.

Polled Hereford 1-yr. heifers, good starters out of Homegrown & Victor, \$1,000. Richard Dunn, 68 Tyrone Avery Rd., Morgantown, 26508; 594-2603.

Black Angus 1-yr. bull, throws nice 60 lb. calves, stays home, \$1,600/trade for cattle. Steve Feaster, 44 Buckhannon Lane, Keyser, 26726; 790-2999.

Reg. Red Angus yrlg. bulls, \$2,500. Sharon Francis, 8554 Liverpool Rd., Sandyville, 25275; 273-3559; paradisefarm@frontier.com.

Reg. Angus, Limousin & Lim/Flex yrlg. -18-mo. bulls, black, polled, calving ease, vacc., passed BSE, \$2,000. Kim Getz, 122 Dolly Hill Rd., Scherr, 26726; 749-8043; ralimousin@frontier.net.

Reg. Shorthorn yrlg. bulls, polled, roan & red, good disp., \$900. Darwin Gough, 1124 Rocket Center Rd., Keyser, 26726; 726-7107.

Reg. Polled Hereford yrlgs.: open heifers, \$1,500; bulls, \$1,800, all Bennett Encore, Boomer P606, Victor Supreme & Trust blood, passed BSE; 27-mo. herd bull, Trust & Progress blood, calves on site, \$2,500. Mike Isner, 1951 Sand Run Rd., Philippi, 26416; 402-416-4234.

Reg. Polled Hereford: 1-yr. cows/w 1-mo. calves, \$2,500/pr.; 3-yr. cow due to calve 4/22, \$2,400; 14-mo. cross bred heifer, \$1,200. Ribeye/Boomer/Remintall Online/Ward/Goff blood, easy calves & great calf growth. Kevin Kelly, 449

Glory Dr., Kingwood, 26537; 685-7355.

Black Angus 5-yr. -7-yr. cows bred to Black Baldie bull for 4/22 calves, \$1,500/ea. Fred Legg, 62 White Oak Dr., Scarborough, 25917; 575-5639.

Scottish Highland yrlg. heifers, 2, \$500/ea. Mike Moran, 336 Flat Mtn. Rd., Alderson, 24901; 667-7188.

Reg. Black Angus yrlg. bulls, diverse blood, low birth wt., good disp., excel. genetics, \$1,500/up. Melville Moyers, 11779 US Hwy, 33W, Normantown, 25267; 354-7622.

Reg. 14-mo. -16-mo. bulls, semen checked, calving ease, suitable for heifers, all perf. data avail., \$2,000-\$2,500; Reg. Angus 3-yr. bull avail. 6/20, excel. quality, \$3,500. Dwayne O'Dell, 829 Little Lefthand Rd., Amma, 25005; 565-9301.

Black Angus yrlg. bull, good disp., \$950. Phil Rickers, 2958 Volcano Rd., Walker, 26180; 679-5744; 588-1067.

Reg. Red Angus 12-mo. -15-mo., semen tested, \$2,000. Bill Rohr, 572 Buckboard Lane, Buckhannon, 26201; 613-9522.

Pure Black Angus yrlgs., can be reg. great blood, \$1,600. Randall Rumer, 295 Caraway Lane, Renick, 24966; 497-2657; mountaingatefarm@frontier.com.

Reg. Polled Hereford yrlg. bulls, DNA tested, dark red, low birth wt. EPDs, \$1,800/up. Ken Scott, 2586 Grandview Rd., Beaver, 25813; 573-0844; chance37@suddenlink.net.

Reg. Polled Hereford 4-yr., bull, \$1,800. Tyler Steele, 1991 Sliding Run Rd., Burnsville, 26335; 462-4711.

Reg. Angus bulls: 4-yr. herd bull, TenX blood, calving ease, good disp., \$2,400; yrlg. bull, TenX over Hoover Dam blood, bw 1.3, yrlg. 109, \$2,000. Dave Summers, 1096 Summers Rd., Grafton, 26354; 265-3150; 677-6255.

Reg. Angus 2.5 yr. herd bull, Spring Hill/Hickcock blood, calving ease, CED: 10, bw: 0.1, yrlg.: 102, milk 24, good disp., used on our heifers for 2 yrs., \$2,300. Rod Summers, 98 Meadland Rd., Flemington, 26347; 842-7958; 918-7377.

Cows & calves, \$800/up. Dale Thayer, 257 Poplar Ridge Rd., Sutton, 26601; 765-5712.

Reg. Black Angus 4-yr. herd sire, pure Rito genetics, Woodside/Weherman blood, excel. EPDs, used on heifers & cows, good disp., easy handling, sires thickness, \$2,200. J. Taylor, 875 Jim Kennedy Rd., Fairmont, 26554; 363-5757.

Cattle Wants

Miniature breed cattle. Diana Clark, 23 Rhododendron Lane, Kingwood, 26537; 329-2799.

Looking for a bottle calf or orphaned calf. Mary Simpson, 511 Dudley Fork Rd., Mannington, 26582; 986-3408; evenings.

REGISTERED MINIATURE & MIDSIZE BULL BREEDING SERVICE

You must produce a recent veterinary disease test for negative BVD,
BLV & Johnnes
2579 Sauls Run Rd.,
Buckhannon, WV
Mark Miles, 472-2558.

3RD ANNUAL SPRING FEVER SALE

April 30; 1 p.m.
Jackson's Mill, Weston WV
Selling over 70 lots of Simmental Cattle
For information or catalog, Contact,
Chris Brown, 290-8383.

ANNUAL WV BEEF EXPO

April 9; 9:30 a.m.

New barn @ Jackson's Mill
Weston WV

Selling 6 breeds of cattle

For information or catalog, 269-4660 or
842-7958;
bmloyd@mail.wvu.edu.**SHILOH TRAIL RIDERS**

April 16; 10 a.m.

Rain date, April 23, 10 a.m.

Ellenboro Trail Head

Selling 6 breeds of cattle

Contact, Betty Adams, 643-2043.S

Equipment Sales**No trucks, cars, vans, campers or other autos; backhoes (except 3-pt. hitch), dozers or other construction equipment; lawn equipment; no parts.****Int'l** 140 farm tractor w/3 pieces of equip., \$3,200. Don Black, 1048 Old N&W Rd., Dunlow, 25511; 385-4696.**JD** 125 moldboard plows, 3-pt. mount, sprint trip: 3x16, \$875; 3x14, \$700; Galfre '15 GTS520 hay tedder 4-spool hyd. lift, \$3,000; AC 14' fold up disc, hyd. lift, \$1,200; spike tooth harrow, 5 bar, 20' fold out, \$650. Danny Belcher, 6203 Gay Rd., Ripley, 25271; 377-3553.**Kubota** 2100 4 WD tractor w/front end loader, backhoe attach. & 4' brush hog/finish mower, 1,200 hrs., \$6,500; MF 230 tractor w/side mower, new tires, \$5,000, both garage kept, excel. cond. Jeff Bennett, Rt. 50 W., Clarksburg, 26302; 844-0227.**MF** '93 231 diesel farm tractor, 38 hp, 2,211 hrs., garage kept, excel. cond., \$8,500. Jack Browning, 8300 Court Ave., Hamlin, 25523; 549-7301.**Ford** 3-cyl. diesel, \$6,700; NAA w/new tires & rims, totally reconditioned, \$5,000; gravity boxes w/wagon, 3, \$800-\$1,800; Hardi tandem axle corn sprayer, \$1,750. Bus Conaway, P.O. Box 1355, Elkins, 26241; 642-3208.**MF** 65 4 cyl. Perkins diesel engine, 100 hrs on rebuild, good cond., \$6,500. Doug Cooper, 9121 Dry Branch Rd., Valley Head, 26294; 339-6309.**JD** 430 4x5 round baler, twine tie, has in cab bale monitor, upgraded to elec. twine tie, only requires 1 set of hyd. outlets to run, made 230 bales last summer. Eric Cunningham, 2862 Stewartstown Rd., Morgantown, 26508; 282-5194.**MF** '10 2625 farm tractor, 65 hp, 4 WD w/loader, shuttle shift, canopy, telescopic 3-pt. hitch, remotes have never been used, 1,200 hrs., excel. cond., \$28,500. Terry Daniel, Box 27, Fairdale, 25839; 934-5471.**Ford**; Golden Jubilee tractor, '53, \$3,500; 501 rear mower, \$800. David Daugherty, 3683 Union Rd., Philippi, 26416; 457-4603; after 5 p.m.**Kubota** MX5000DT utility special, 50 hp, 4 WD W/6' loader w/teeth, 6' plow, canopy & backhoe w/6' dig, 248 hrs., excel. cond., come w/finish mower & 3-pt. hitch excel splitter, \$28,500. Sam DeCapio, 166 Tasha Dr., New Cumberland, 26047; 914-9953.**NH** 256 side delivery rake, \$1,800; 2-spool

hay tedder, \$700; set of 2-bottom plows, \$400; 7' MH sickle bar mower, \$1,700; 6' brush hog, SQ720, \$600. Richard Fauver, 806 Mill Crk. Rd., Mt. Alto, 26264; 373-7933.

NH side delivery rake w/dolly wheels, \$1,500/ or trade for cattle. Steve Feaster, 44 Buckhannon Lane, Keyser, 26276; 790-2999.**Country** Line 6' tiller, excel. cond., \$1,800. 240 Haynes Lane, Princeton, 24739; 487-1633.**Frontier** DM1160 disc mower \$5,800. Chuck Hudson, 161 Pickens Ave., Buffalo, 25033; 937-2789.**McHale** 991BC wrapper, \$6,500. Woody Ireland, 342 Ireland Rd. Pullman, 26241; 349-2957.**NH** BR740 silage special baler, excel. cond., \$12,000. Mike Isner, 1951 Sand Run Rd., Philippi, 26416; 402-416-4234.**Int'l** TD9 tractor, \$14,500; Ford 2-bottom plow & hay tedder, \$650/ea.; MF sickle bar mower, \$1,800; hay crimper, JD hay tedder, single bottom plow, corn planter, & dump rake, \$325/ea.; more equip. Ron Malus, 3446 Snake Run Rd., Alderson, 24910; 392-5231.**Kubota** BX2200, 900 hrs., 22 hp, 4 WD, 3pt. hitch, rear & mid mount PTO, front loader, LA-211, 60" mid mount rotary mower, full set of original manuals, \$8,800. Frank Mash, 12 Cottonwood Dr., Elkview, 25071; 965-3462.**Ford** "14 3-bottom trip plows, very little wear, \$450; love 6' 3-pt. disc, \$200. 1192 Jonathan Rd., Parsons, 26287; 478-2570.**Ford** 2910 2 WD tractor, 44 hp, 1,309 hrs., \$10,000. Homer Plumley, 351 Plumley Mtn. Rd., Shady Springs, 25918; 573-8799.**Befco** 42" tiller, 3-pt., good cond., \$250. John Rowe, 821 Reynolds Gap Rd., Old Fields, 26845; 668-0894.**Ford** diesel: '82 3600, \$6,500; '98 5610 w/cab, \$15,000; JD '46 A, \$5,000; Sitrex 11' hay tedder, \$2,500. Donald Seckman, 705 Jefferson Rd., Alma, 26320; 758-2955.**Ford** 7' rear mower, 2 blades, has not been used for some time but still works or could be used for repairing another, fair cond., \$200. Gerald Short, 380 Valley Dr., P.O. Box 279, Oceana, 24870; 682-5175.**Vermeer** silage bale wrapper, SW-2500 works perfect, \$6,000. George Street, P.O. Box 805, Masontown, 26542; 290-8670.**Anderson** '20 RB580 bale wrapper, 4x4 bales, kept inside, excel. cond., \$5,000. Colin Sprouse, 8736 Gassaway Rd., Normantown, 26267; 462-8106.**Kuhn** GMD 600DII 8' disc mower, \$4,200. Tyler Steele, 1991 Sliding Run Rd., Burnsville, 26335; 462-4711.**MF** 2-row conventional corn planter w/insecticide box stored inside, good cond., \$500; hammer mill grain converted to PTO on trailer, stored inside, \$100. Jim Summers, 305 Centenary Rd., Bruceton Mills, 26525; 379-3815.**Gravelly** tractor, super convertible, 85 speed elec. start, new tires & battery w/30" bush hog mower, \$450. Charles Watson, 4256 McClellan Hwy., Branchland, 25506; 778-3533.**Equipment Wants****Manure** spreader for sm. farm. Kathy Bucks, 635 Starlight Rd., Mt. Nebo, 26679; 619-6166.**NH** 630 round baler, good cond. Johnny Greg, 232 Greg Ridge Rd., St. Marys, 26170; 299-4140.**8-wheel** V rake w/kicker, good cond., fair price. Timothy Templon, 5836 Pine Crk. Rd., Grantsville, 26147; 354-7650.**Goat Sales****Pure** reg. Nubian bucklings & doe, various colors, \$200/ea. Leonard Hardway, 593 Glen Camp Rd., Palestine, 26160; 275-3094.**Nigerian Dwarf** reg./registrable: 10-wk. -2-yr. does/doelings, disbudded/polled, blue eyes, great colors, vacc., \$375-\$600; bucklings, 2, vacc., disbudded, \$150-\$300; polled moon spotted 1-yr. buck, \$500. Michelle Johnson, 2030 Cobb Hollow Rd., Red House, 25168; 561-8997.**Goat Wants****Buck** & 2, does, 6-mo. or a little older, buck not related. Maryetta Ables, P.O. box 54, Sutton, 26601; 678-5394; maryetta26601@gmail.com.**Hog Sales****Berkshire/GOS** cross late April, early May pigs, \$100; Berkshire 2-yr. boar, excel. disp., \$300. Clint Curtis, 262 O'Dell Farm Lane, Oak Hill, 25901; 640-4014.**Pigs**, different colors, 10, \$75/ea.; sow, 400 lbs., \$300. Ronald Lynch, 8346 New Hope Rd., Bluefield, 24701; 589-7652.**Horse Sales****Donkeys**, 2, males; Palomino riding mare, \$1,500. Trey Evans, 204 Herb Harsh Rd., Eglon, 26716; 301-616-7676.**Horse Wants****Miniature** jack donkey. Benny Sturgill, 975 Central Ave., Surveyor, 25932; 673-6938.**INTERMEDIATE HORSE CLINIC**

May 21, 9 a.m.-4 p.m.

Bring Lunch, snack & refreshment provided, \$75 w/lesson horse; \$60 w/ your own horse, proof of neg.

coggins/vacc. required,

Mounted Blessings, LLC, Lewisburg, sign up at info@letsridewv.com.

Plant Sales**No medicinal plants, nursery stock, common agricultural seeds unless tested for germination.****Seeds:** Creasy green seed, \$2/tbsp.; WV 63 tomato, 2/250 seed, plus SASE. Denny Canterbury, 2875 Seneca Trail S., Ronceverte, 24970; 645-6370.**Seeds:** old-time Logan Giant; old-time Logan 1/2 runners, both \$16.50/125 seeds, shipped ppd or \$12/125 seeds picked up. Terry Daniel, Box 27, Fairdale, 25839; 934-5471.**Seeds:** old-time fat man, Logan Giant, Rattlesnake, brown & white half runner pole bean, more, \$15/100 seed, all tested for germination. Betty Flanagan, 467 Ritchie Farm Rd., Summersville, 26651; 880-0135; allen.flanagan@gmail.com.**Castor** seeds, \$1/8 seeds; Holley Hop dbl. flower seed, red, \$1/tsp.; Marigold flower seed, gold, \$1/tsp.; Cinnamon vine flower seeds, \$1/16 seed, all SASE. B. Hagy, 2744 Fenwick Rd., Richwood, 26261; 846-4364.**Ramps:** red, \$10/lb.; white, \$12/lb. Toby Lowe, 5029 Mill Crk. Rd., Quinwood, 25981; 438-6733.**Caster** beans/mole killer, \$1/12 seed, SASE

to Jerry McCauley 5519 Seneca Trail, Valley Bend, 26293; 642-9737.

Old fashioned winter onion sets, \$3/qt. bag. Larry Parsons, 276 Maple Drive, Evans, 25241; 372-4575.

Seeds: flood beans, black & purple lima, red bloom & ½ runners, all pole, \$15/100 seeds. Scott Whitacre, 2290 Braddock School Rd., Slanesville, 25444; 496-8665.

Poultry Sales

Chickens: roosters, hens, pullets & stags, different breeds & sizes, \$10/up. Robert Adkins, 1121 Raccoon Crk. Rd., Branchland, 25506; 912-667-9646.

Muscovy 9-mo. ducks, white meat ducks, 98% fat free, just started to lay, males & females, \$10/ea.; game roosters & hens that are laying, \$5/ea. Rex Miller, 5733 Ripley Rd., Cottageville 25239; 372-2034.

Sheep Wants

Will take orphaned lambs off your hands free of charge, willing to pick them up at your farm. Grace Fisher, 1831 Hokes Mill Rd., Ronceverte, 681-318-6833.

Jacob 11-mo. ram, \$500. Lisa Stump, 2021 Brohard Rd., Brohard, 26138; 354-9594.

Miscellaneous Sales

No riding habits or other clothes; appliances or furniture; antiques or crafts; hand power tools or equipment; food processing or preservation items or equipment; general wood working tools; firewood. Only dogs recognized by the Hay '21 sq. bales, mixed meadow grass: 1st cut, \$5/bale; 2nd cut, \$6/bale, loaded out of barn, \$1 extra on quantities less than 50, del. service avail. for additional fee. Danny Bainbridge, 104 Kennywood Dr., Fairmont, 26554; 288-1171.

Livestock: water tank, 8', galvanized, \$150; wooden 12x14' loading ramp, treated 2x6s w/ traction cleats 16" on center and 4, 4' cross braces, \$100; more. Linda Buckanan, 1011 Crest View Dr., Creston, 26141; 354-7506.

Hay 4x5 round bales, mixed grass clover, net wrapped, stored inside, easy loading, \$30/bale. Ed Carson, 688 Carson Rd., West Columbia, 25287; 674-2274.

AKC Anatolian Shep. pups, males & females, both parents working on the farm, socialized w/ livestock, dogs & children, \$600. Jonell Carver, 3178 Miletus Rd., Salem, 26426; 871-6288; turtleridgefarmllc@gmail.com.

CKC reg. Collie pups, the Old Lassie Collie, sable/white & tri-colored, parents on premises, vacc./wormed, \$500/up, w/\$50 deposit. Kevin Cummings, 110 Walnut St., Evans, 25241; 372-8615.

Hay sq. bales, mix grass, \$5/bale, located in Lincoln Co.; 3-ton free standing grain bin, \$1,750/obo. Robert Dorsey, 691 Eli Fork Rd., Sumerco, 25567; 342-5712.

Hay 1st & 2nd cut, stored in the dry, easy access: 4x4 round bales, \$45/bale; sq. bales, \$5/ea. Eugene Finster, 894 Indian Fork Rd., Orlando, 26412; 452-8252.

Acreage: Jackson Co.: 128 A. w/house site, elec., water, & septic, fields, pond, hay field, woods, mineral rights, \$385,000. Sharon Francis, 8554 Liverpool Rd., Sandyville, 25275; 273-3559; paradisefarm@frontier.com.

Maple syrup, pure WV: \$16/qt.; \$10/pt.; \$6/½ pt.; \$3/100ml. Karen Hartman, 1761 Burgess Hollow, New Creek, 26743; 788-1831.

55-gal. metal barrels w/lids & bands, nice &

clean, \$25/ea. Max High, 8508 Patterson Crk. Rd., Lahmansville, 26731; 851-0401.

Stone ground buckwheat flour, \$4/qt.; stone ground yellow cornmeal, \$3/qt. Harry Hornbeck, 43 Eagle St., Buckhannon, 26201; 472-4277.

Hay '20 4x5 round bales, \$25/bale; '19, \$20/bale, all tied w/string. Clark Humphreys, 7217 Indian Mills Rd., Peterstown, 24963; 753-9990.

Hay, round bales, 400 lbs., \$10/ea. Patricia Johnston, 1044 Glendale Rd., Cairo, 26337; 904-945-3883.

Worm castings natural plant food, \$20/10 lb.; \$39/25 lbs.; \$64/50 lbs plus S&H, will del. local, bulk sales & pricing upon request. David Lester, P.O. Box 216 Enterprise, 26568; davidplester@aol.com.

Hay 4½x4 600 lb. round bales, mixed grass, string wrapped, \$20/bale. Tim Lowers, 2826 Harris Hwy., Washington, 26181; 681-297-9202; 483-0068.

AKC reg. Aust. Shep. pups, 2, tri-colored males, blue merle female, 4, blue merle males, \$1,000. Pam Mace, 8269 Gem Rd., Heaters, 26627.

Free round bales to use for mulch or decoration. Brandon McDaniel, 300 Ludwig Rd., Graf-ton, 26354; 612-6161.

Blue Heeler & Collie cross, 5860 Union Campground Rd., Letart, 25253; 882-1175.

Hay '21 4x5 round bales wrapped, \$45/bale. Michael Morris, 151 Morris Hollow Rd., Rosemont, 26424; 627-5064; 612-6677.

Black walnut kernels, vacuum sealed 1 lb. package, \$15 + postage. Calvin Morrison, P.O. Box 877, Jane Lew, 26378; 884-7444.

Acreage: Putnam Co.: 8 A., in Emerald Fields Grandview Ridge, 293' rd. footage, all underground util., \$65,000. Bill Morton, 104 Marble Dr., Eleanor, 25070; 543-4575.

Hay lg. sq. bales, quality mixed grasses, easy access, never wet, \$6/bale. Larry Parsons, 76 Maple Drive, Evans, 25241; 372-4575.

Horse drawn doctors buggy, \$300; Amish buggy, \$350; plow, \$45; mowing machine, \$200; saddles, \$75/ea.; cider mill, \$150; sheller, \$75. Richard Rumley, 200 Laura Lane, Charleston, 25302; 435-6445.

Hay 4x4 round bales, never wet, stored inside, \$30/bale. Jack Smith, 6087 Arzella Rd., Friendly, 26146; 684-3275.

Hay '21 1st cut, good hay, never wet, \$5/bale. Shirley Titus, 1069 Big Run Rd., Burton, 26526; 889-2650.

Hay '21 4x4 round bales, \$30/bale. Becky Wilson, 2841 Sellers Rd., Middlebourne, 26149; 771-8135.

Gas Generator used with a trailer, PTO, \$4,800. Mary Wolfe, 1430 Tribble Rd., Leon, 25123; 458-1992.

Fleece, hand spinning/stuffing, raw/washed, natural colors & white, Shetland, Border Leicester, Dorset Horn cross, Southdown/Cotswold cross Finn, \$0-\$50, oz.-full fleece; Schact matchless spinning wheel, \$1,400. Linda Zinn, 2162

Compression rods for a 330 or JD 457 baler. Jim Robinson, 2374 Sycamore Rd., Clarksburg, 26301; 624-4790.

Louet S-10 spinning wheel. Linda Zinn, 2162 Skelton Run Rd., Wallace, 26448; 782-3704.

OUR MOUNTAIN HERBS; GROWING, COLLECTING & SHARING OUR WOODLAND PLANTS

April 23; 10:00 a.m -4 p.m.
Tygart Lake State Park Lodge

SPRAYING

Pasture, hay land & more with herbicide to treat weeds & brush, also spraying fert. & calcium products. Licensed, insured & experienced, \$300/up.
Dennis Burns, P.O. Box 524
Rupert, WV,
304-646-2779.



GOLD STAR MOTHERS RECEIVE VET AND HEROES TO AGRICULTURE GRANT

West Virginia Gold Star Mothers will soon be planting more living memorials to remember their loved ones lost in the line of duty.

The WVDA has awarded the group a \$24,000 grant through the Veterans and Heroes to Agriculture Program. The money will be used to plant legacy orchards to be harvested for local community members, conduct pruning and grafting workshops, as well as management training.

"The Gold Star Mothers have continued to honor those who served their country with these memorials. We are happy to partner on these projects which remembers our veterans' legacy through agriculture," said Commissioner of Agriculture Kent Leonhardt. "We also look forward to seeing the impact these orchards have on their local communities."

The Veterans and Heroes to Agriculture Grant Program was developed to provide funding to organizations around the state who work directly with or provide support to law enforcement, fire fighters, emergency medical service, first responders, veterans, active-duty military and/or their spouses and family within an agricultural capacity.

For more information, contact Sierra Cox at kcox@wvda.us.

RETURN SERVICE REQUESTED

GARDEN CALENDAR

APRIL 2022

- APRIL 1** Seed onions, beets and radishes (outdoors).
- APRIL 2** Monitor for asparagus beetles. Seed kale and collards. Seed Ethiopian kale.
- APRIL 4** Seed basil for transplant (indoors). Plant cabbage and kohlrabi.
- APRIL 5** Plant potatoes and raspberries. Seed beets and kale (outdoors).
- APRIL 6** Seed parsnips (outdoors). Seed or plant broccoli, cabbage and cauliflower (outdoors).
- APRIL 7** Seed dill (indoors). Plant blackberries. Plant fruit and hazelnut trees.
- APRIL 8** Seed leaf lettuce (outdoors). Plant or seed shallots.
- APRIL 9** Seed radishes outdoors. Apply crabgrass control.
- APRIL 11** Order sweet potato slips or bed sweet potatoes for transplanting.
- APRIL 12** Fertilize lawn. Seed or plant collards.
- APRIL 13** Seed watermelons (indoors). Start compost pile. Plant perennials.
- APRIL 14** Use row covers to protect flowers and tender plants. Seed late tomatoes (indoors).
- APRIL 15** Loosen mulch on strawberries.
- APRIL 16** Remove row cover from strawberries. Refresh mulch in landscape beds.
- APRIL 18** Seed or transplant peas (outdoors). Seed endive. Transplant leeks.
- APRIL 19** Seed chives (outdoors). Seed new lawn. Seed annual herbs.
- APRIL 20** Seed carrots and Swiss chard. Seed Asian greens. Seed sweet corn.
- APRIL 21** Plant summer-flowering bulbs.
- APRIL 22** Apply pre-emergent landscape weed control.
- APRIL 23** Begin spraying fruit trees after petals fall.
- APRIL 25** Buy herb cuttings/plugs. Start grafting tomato plants.
- APRIL 26** Seed flat-leaf parsley.
- APRIL 27** Seed or transplant lemon balm (outdoors).
- APRIL 28** Seed tomatillo for transplants.
- APRIL 29** Seed ground cherries.

Articles in this publication may be reprinted, with the exception of advertisements, when a credit by-line is given to the West Virginia Department of Agriculture. The use of trade names in this publication is for purposes of clarity and information only. No endorsement is made or implied of any product, or is it implied that similar products are less effective. Statement of Policy Regarding Equal Opportunity and Participation in Programs: It is the policy of the West Virginia Department of Agriculture to provide its services and programs to all persons without regard to sex, race, color, age, religion, national origin or handicap.